



The best quality hand-selected natural stone for your home and garden

# GLOBAL STONE

NATURAL STONE PAVING

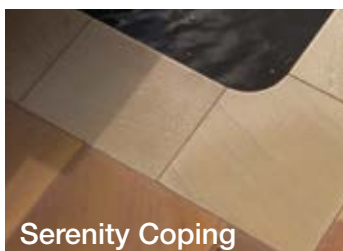
The 2014 Collection

The 2014 Collection

# The **2014** Collection



Old Rectory



Serenity Coping



Artisan



Sandstone



Limestone



Marble



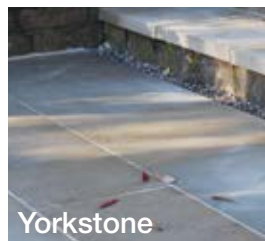
Travertine



Granite



Petrous



Yorkstone



Slate



Clay Paver

# Welcome...

We believe the right natural stone floor will last a lifetime and become the foundation of any design scheme, whether used indoors or out.

Our latest Collection of hand-selected stone has been selected with you in mind, and is sure to have an array of paving solutions to suit your project.

The following pages are filled with inspirational layouts that demonstrate how our premium natural stone paving and walling solutions can be used. With a range of colours, styles and textures available, there's a stone for every taste.

Whether you're looking to transform your garden, driveway or add something different to your kitchen, bathroom or hallway, our expert team can recommend the best natural stone for you.

Browse and select your favourite ranges by suitability and style, and choose your laying pattern from our practical guides towards the back of the brochure. For more inspiration and practical tips on getting the best from your paving design, visit us online at [www.globalstonepaving.co.uk](http://www.globalstonepaving.co.uk).

Julian Wood  
*Sales and Marketing Director*



Internal



External



Contemporary



Traditional

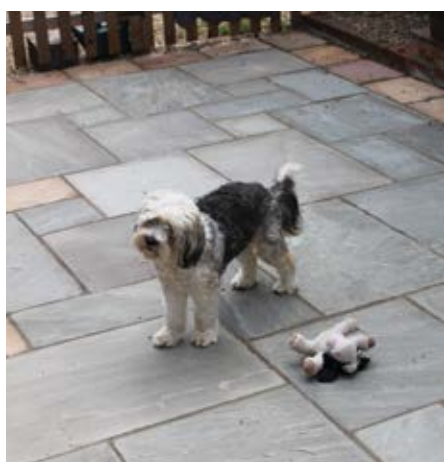
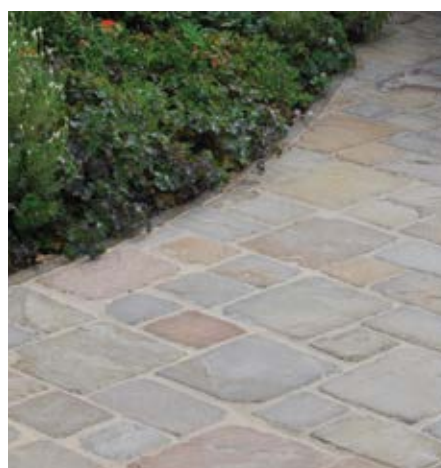


# WIN £100

National Garden Centre Voucher



Showcase your charming new patio, driveway or landscape project using Global Stone products in our exclusive monthly competition.



Entrants will have the chance of winning a £100 National Garden Centre voucher and being featured in the next Global Stone brochure. Simply fill in your details and upload up to six high quality images of your landscaping project for your chance to win.

*The winner will be contacted via email shortly after the closing date (29th of each month).*



Visit our website for more information [www.globalstonepaving.co.uk](http://www.globalstonepaving.co.uk)

Colours vary in all natural stone products so all the images shown are as a guide only.

# The 2014 Collection



Inside



Outside



Contemporary



Traditional

<b>Old Rectory</b>	Old Rectory Paving	6				
	Old Rectory Cobble	8				
	Old Rectory Victorian Paver	10				
	Old Rectory Walling	11				
	Old Rectory Circles	12				
<b>Sandstone</b>	Sandstone Paving	13				
	Sandstone Circles	18				
	Sandstone Aztec Circle	19				
	Sandstone Octagon	20				
	Sandstone Gardenstone	21				
	Sandstone Edgings	22				
	Sandstone Stepping Stones	23				
	Sandstone Serenity Copings	24				
	Sandstone Bullnosed Flags	25				
	Sandstone Driveway & Pathway Setts	26				
	Sandstone Features	28				
	<b>Verona</b>	Verona Internal Paving	30			
<b>Artisan</b>	Artisan Mirage Paving	31				
	Artisan Mirage Setts & Phantasy Vine	33				
	Artisan Linear Paving	35				
	Artisan Serenity Paving	37				
	Artisan Quartzite Paving	39				
<b>Petrous</b>	Petrous Paving	40				
<b>Marble</b>	Marble Morning Mist Paving	42				
<b>Limestone</b>	Limestone Midnight Paving	43				
	Limestone Neptune Paving	44				
	Limestone Golden Glory Paving	45				
	Limestone Cathedral & Honey Blend Paving	46				
<b>Travertine</b>	Travertine Antiqued Paving	48				
	Travertine Linear Paving	51				
	Travertine Internal Tiling	52				
<b>Slate</b>	Slate Paving	53				
	Slate Cobble Paving	56				
<b>Granite</b>	Granite Polar Paving	57				
	Granite Polar Cobble	59				
	Granite Polar Setts	60				
<b>Clay Pavers</b>	Clay Pavers	62				
<b>Yorkstone</b>	Yorkstone Paving	64				
<b>Extras</b>	Laying Guidelines	65				
	Global Stone Installation Guidelines	71				
	Top Tips for Your Natural Stone	74				
	General Information	75				

# Old Rectory Collection Paving

This inspirational collection offers a stylish hard landscaping solution for a variety of classic garden projects.

The elegant Old Rectory paving is created using a special weathering process, giving the stone a mature appearance that makes it an ideal choice for traditional schemes. Old Rectory circles, cobbles and walling complement the paving perfectly – creating a timeless and coordinated look.



Old Rectory Sandstone - Monsoon



Old Rectory Sandstone - Buff Brown



Old Rectory Limestone - Antique Verde

Colours vary in all natural stone products so all the images shown are as a guide only.



Old Rectory

6



Old Rectory Sandstone - York Green



Old Rectory Paving - Sandstone & Limestone



Monsoon



York Green



Modak Rose



Buff Brown



Antique Verde



Old Rectory Sandstone - Modak Rose

# Old Rectory Collection Cobble

Elegant natural stone cobbles never fail to add a distinctive classic appearance to your outside space.

Whether you're looking to transform your driveway or create an eye-catching feature within a courtyard, Old Rectory cobbles are a terrific choice. Laid using traditional methods, this durable collection simply oozes character.



Ideal in  
cottage-style  
gardens



Old Rectory

8

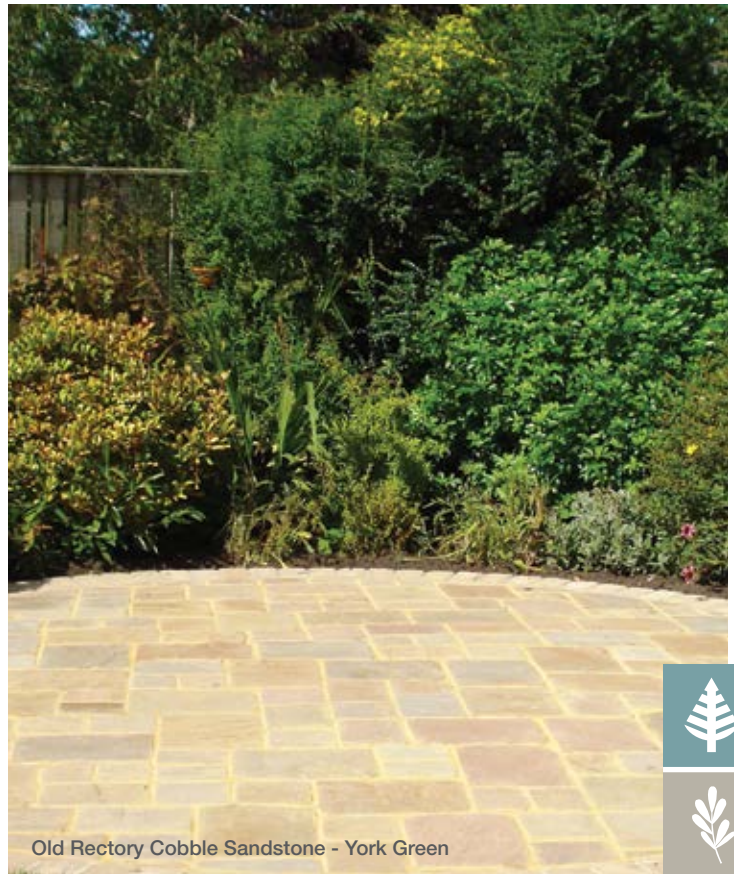
Old Rectory Cobble Sandstone - Monsoon

Colours vary in all natural stone products so all the images shown are as a guide only.





Old Rectory Cobble Sandstone - Modak Rose



Old Rectory Cobble Sandstone - York Green

Old Rectory Cobble - Sandstone & Limestone



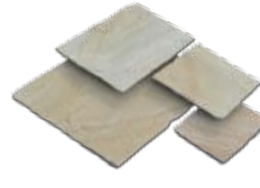
Monsoon



York Green



Modak Rose



Buff Brown



Antique Verde



Old Rectory Cobble Sandstone - York Green



Old Rectory Cobble Limestone - Antique Verde



# Old Rectory Collection Victorian Paver

Elegant and everlasting style from the 19th century.

Our Victorian Paver range is new for 2014 and embodies all that is good about design from this period of history. The functional look and feel of these pavers will suit more traditional gardens and can be used to create pathways or patio areas that exude a smart and practical style.

A great look  
for a courtyard  
garden

York Green



Old Rectory

10

## OLD RECTORY VICTORIAN PAVER PRODUCT INFORMATION

	SIZES	nos. per pack	COLOURS	
			Buff Brown	York Green
VICTORIAN PAVER	120 x 240 x 30 mm calibrated	350	✓	✓

Colours vary in all natural stone products so all the images shown are as a guide only.



Old Rectory Walling - Mint



## Old Rectory Collection Walling

Choose natural sandstone walling with an attractive aged appearance that'll look good for years to come.

This classic walling can be laid using a single sized stone, or can be made unique to you should you use all three sizes within your design. Why not try blending your walling with the rest of the Old Rectory collection for great results?

### Old Rectory Walling - Sandstone



Mint



Modak Rose



York Green



Monsoon



Old Rectory Walling - Modak Rose



Old Rectory Walling - York Green



Old Rectory Walling - Monsoon



Old Rectory Cobble Circle - Modak Rose



Old Rectory Paving Circle - York Green

## Old Rectory Collection Circles

Add interest to your driveway or courtyard design with a smart circle.

The perfect focal point for a garden – the Old Rectory circle is the ideal spot to gather around with friends throughout the summer. Enjoy on its own, or surround with Old Rectory paving for a beautiful contrast.

### OLD RECTORY PRODUCT INFORMATION

	SIZES	m <sup>2</sup> per pack	nos. per project pack	SANDSTONE					LIMESTONE
				Monsoon	York Green	Modak Rose	Buff Brown	Mint	Antique Verde
<b>PAVING*</b> Thickness: 22mm calibrated. Use laying guide B, see page 67.	285 x 285mm	1.2	15	-	-	-	-	-	-
	285 x 570mm	2.42	15	-	-	-	-	-	-
	570 x 570mm	4.21	13	-	-	-	-	-	-
	855 x 570mm	5.82	12	-	-	-	-	-	-
	Project Pack	13.65m <sup>2</sup>	-	✓	✓	✓	✓	-	✓
<b>COBBLE</b> Thickness: Sandstone 30mm calibrated. Limestone 40mm calibrated. Use laying guide D, see page 68.	200 x 150mm	1.23	41	-	-	-	-	-	-
	200 x 200mm	2.28	57	-	-	-	-	-	-
	200 x 300mm	2.28	38	-	-	-	-	-	-
	300 x 400mm	4.92	41	-	-	-	-	-	-
	Project Pack	10.71m <sup>2</sup>	-	✓	✓	✓	✓	-	✓
<b>WALLING</b> Thickness: 55-75mm variable. NB. Each pack when laid covers approximately 4.5m <sup>2</sup>	215 x 100mm	-	280	✓	✓	✓	-	✓	-
	270 x 100mm	-	225	✓	✓	✓	-	✓	-
	325 x 100mm	-	185	✓	✓	✓	-	✓	-
<b>PAVING CIRCLES</b> Thickness: 22mm calibrated. Use laying guides pages 65 & 66.	1.8m	-	-	✓	✓	✓	✓	-	-
	2.8m	-	-	✓	✓	✓	✓	-	-
	Squaring Off Kit for 2.8m Circle	-	-	✓	✓	✓	✓	-	-
<b>COBBLE CIRCLES</b> Variation in thickness: 30mm calibrated Use laying guides pages 65 & 66.	1.8m Diameter	-	-	✓	✓	✓	✓	-	-

\*The product sizes and coverage stated are those achieved when laid using a 10mm joint.

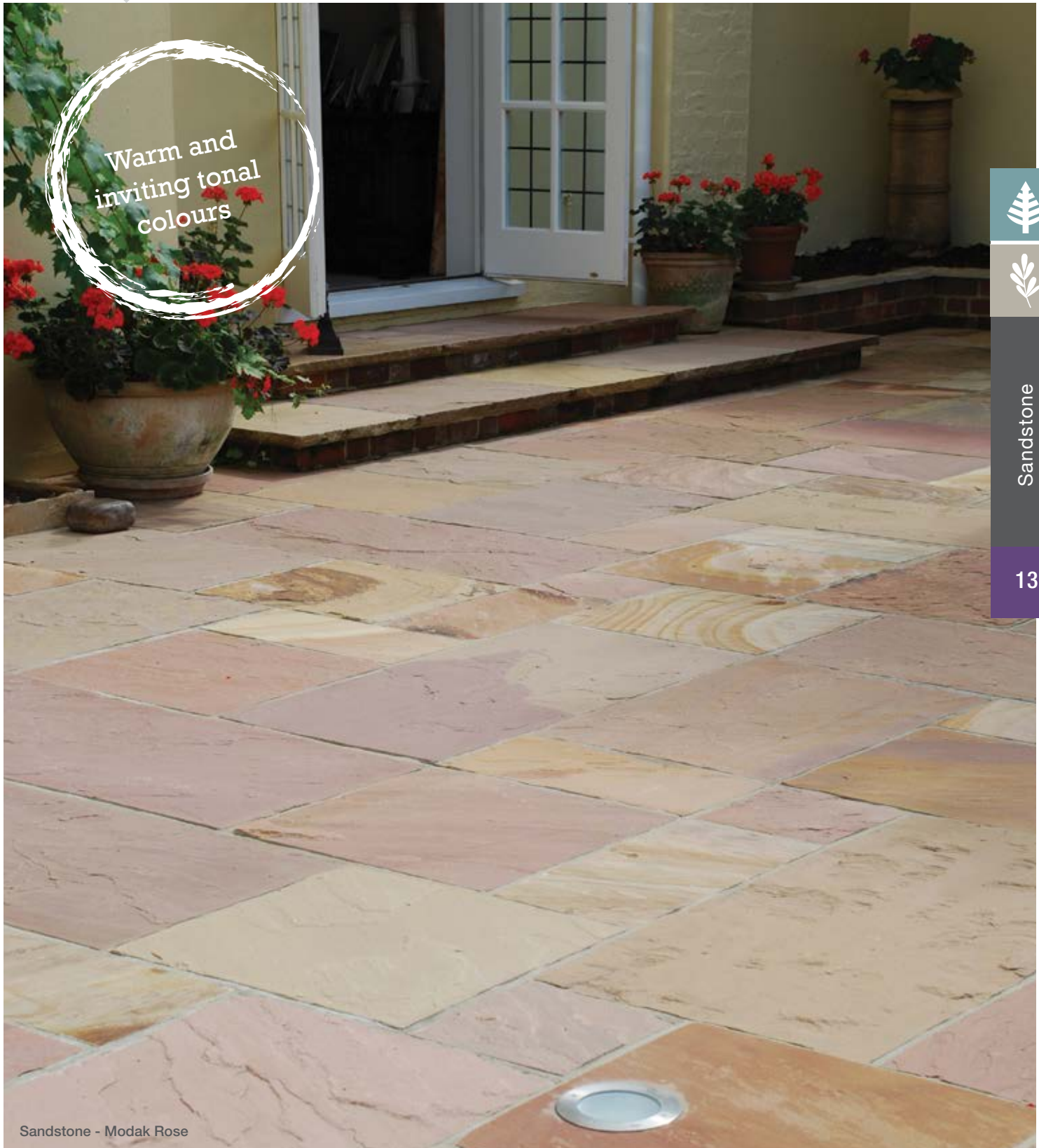
Colours vary in all natural stone products so all the images shown are as a guide only.



# Sandstone Collection Paving

A fine quality natural stone, hand picked to provide an attractive, durable, riven texture in a variety of beautiful colour variations.

Our extensive collection of premium Sandstone paving includes circles, stepping stones, bullnosed flags and a stylish octagon feature, perfect for creating an attractive sun trap. In addition, the broad selection of Sandstone edgings is the ideal finishing touch for any pathway or paved area.



Warm and  
inviting tonal  
colours



Sandstone

13

Sandstone - Modak Rose



Sandstone - Buff Brown



Sandstone

14



Sandstone - Castle Grey



Sandstone - Gold Leaf

Colours vary in all natural stone products so all the images shown are as a guide only.



Sandstone - York Green



Sandstone

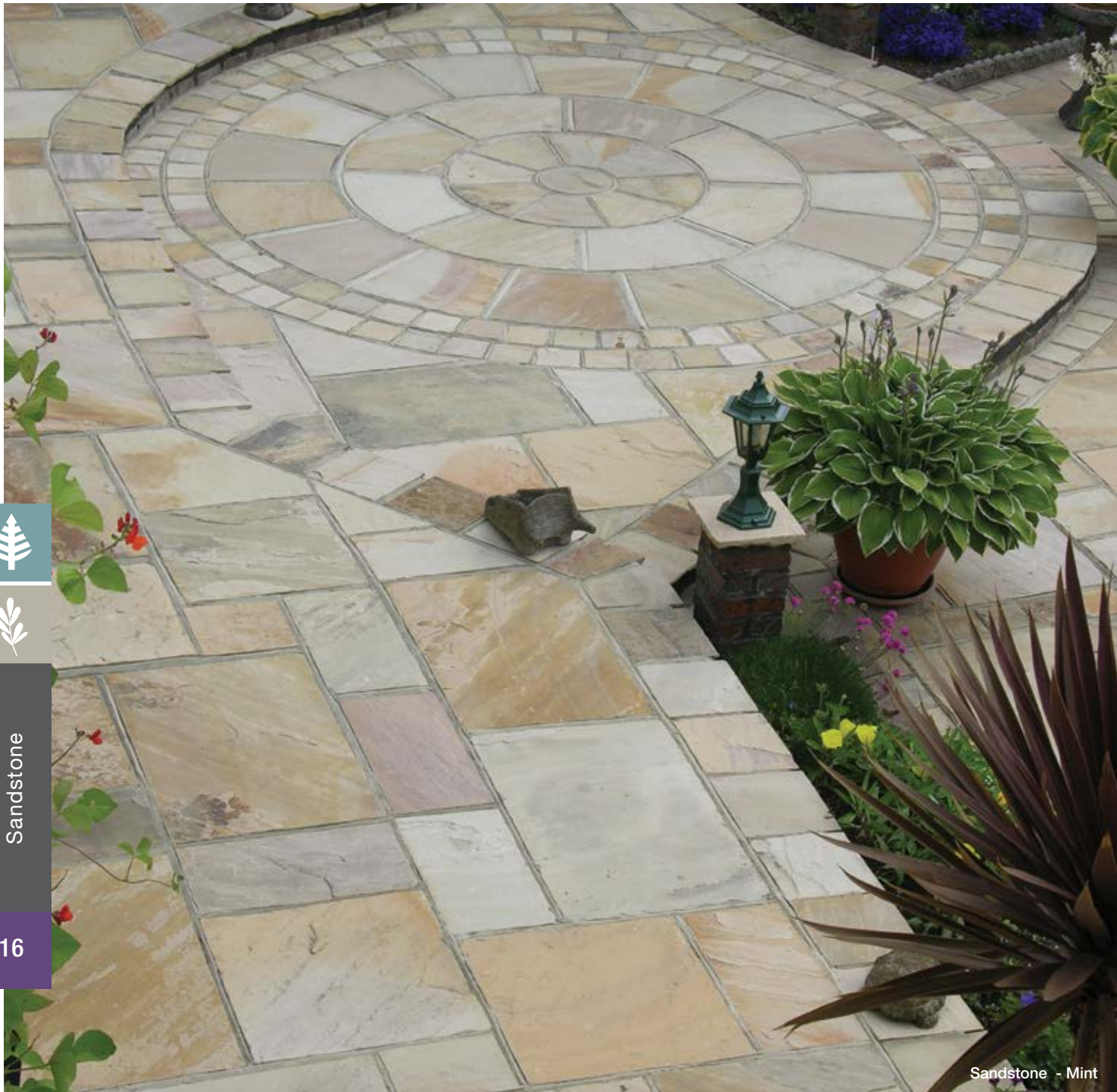


Sandstone - Monsoon



Sandstone - Monsoon

15



Sandstone - Mint

Sandstone - Paving



Buff Brown



Castle Grey



Gold Leaf



Mint



Modak Rose



Monsoon



York Green



Autumn Blend



# Sandstone Colour Variation

Sandstone has been used as a building material since prehistoric times, and is still used across the world today.

Sandstone is largely made up of quartz and feldspar, the most common minerals in the Earth's crust. As such, the colour of the rock varies from tan, brown, yellow, red, grey, pink, white and black – depending on the blend of minerals.

These naturally occurring colour variations are what make this timeless stone so universally appealing. The warm hues work together to create a truly unique scheme, whether used indoors or as part of a garden design.

Shown below is mint paving, as you can see in the circles, colours and shades can vary. Always select your preferred colour from a large display at your local stockist [www.globalstonepaving.co.uk/stockist-locator](http://www.globalstonepaving.co.uk/stockist-locator)



Sandstone

## SANDSTONE PAVING PRODUCT INFORMATION

	SIZES	m <sup>2</sup> per pack	project packs	nos. per project pack	COLOURS							
					Modak Rose	Buff Brown	Castle Grey	York Green	Gold Leaf	Monsoon	Mint	Autumn Blend
<b>PAVING*</b> PROJECT PACKS Thickness: 22mm calibrated.  NB. Autumn Blend only variable handcut thickness 25-45mm.  Use laying guide Plan B, see page 67.	285 x 285mm	1.2	13.65m <sup>2</sup>	15	✓	✓	✓	✓	✓	✓	✓	✓
			7.3m <sup>2</sup>	12	✓	-	-	✓	-	-	✓	-
	285 x 570mm	2.42	13.65m <sup>2</sup>	15	✓	✓	✓	✓	✓	✓	✓	✓
			7.3m <sup>2</sup>	13	✓	-	-	✓	-	-	✓	-
	570 x 570mm	4.21	13.65m <sup>2</sup>	13	✓	✓	✓	✓	✓	✓	✓	✓
			7.3m <sup>2</sup>	13	✓	-	-	✓	-	-	✓	-
855 x 570mm	5.82	13.65m <sup>2</sup>	12	✓	✓	✓	✓	✓	✓	✓	✓	
			SINGLE SIZE PACKS									
		slabs per m <sup>2</sup>	m <sup>2</sup> per pack	slabs per pack								
<b>PAVING*</b> SINGLE PACKS Thickness: 22mm calibrated.  NB. Autumn Blend only variable handcut thickness 25-45mm.  Use laying guides Plans A, B, E, F & H, see pages 67, 69 & 70.	285 x 285mm	12.31	15.43	190	✓	✓	✓	✓	-	-	✓	✓
	285 x 570mm	6.15	14.62	90	✓	✓	✓	✓	-	-	✓	✓
	432 x 570mm	4.06	12.8	52	✓	-	-	✓	-	-	✓	-
	570 x 570mm	3.08	14.62	45	✓	✓	✓	✓	-	-	✓	✓
	855 x 570mm	2.05	11.7	24	✓	✓	✓	✓	-	-	✓	✓
	1140 x 570mm	1.54	14.94	23	✓	-	-	✓	-	-	✓	-

\* The product sizes and coverage stated are those achieved when laid using a 10mm joint.

# Sandstone Collection Circles

Well suited to a traditional setting, this timeless collection will always look right at home.

An elegant Sandstone circle can make a wonderful eye-catching feature or a subtle, tucked-away spot where you can enjoy the peace of your garden. With a wide selection of designs, colours and sizes to choose from – we have a style to suit your tastes.



Sandstone Circle - Buff Brown



Sandstone Circle - Modak Rose



Sandstone Circle - Mint

Colours vary in all natural stone products so all the images shown are as a guide only.



Sandstone

18

# Sandstone Collection *Aztec Circle*

Add a flavour of the Americas to your landscape design with this eye-catching natural Sandstone piece, with a twist!

Want something a little different from your usual circular design? The Aztec circle is designed to add a twist to the traditional layout. Use as a solitary feature, or see it stand out when used within a patio.



Sandstone

19

Sandstone Aztec Circle - Modak Rose

# Sandstone Collection Octagon

A natural Sandstone Octagon will be an effortlessly stylish addition to your garden or patio area.

The elegant angles and sharp lines of the Octagon look clean and sophisticated in traditional gardens. Whether used as a central focal point or hidden away in a secluded part of your garden, the sleek geometric look has a timeless appeal.



Sandstone Octagon - Modak Rose



  
 Sandstone
   
 20

## SANDSTONE CIRCLES & OCTAGON PRODUCT INFORMATION

	SIZES			COLOURS							
				Modak Rose	Buff Brown	Castle Grey	York Green	Gold Leaf	Monsoon	Mint	Autumn Blend
<b>CIRCLES*</b> Thickness: 22mm calibrated. NB. Autumn Blend only variable handcut thickness 25-45mm. Use laying guides, pages 65 & 66.	1.8m			✓	✓	✓	✓	✓	✓	✓	✓
	1.8m with Squaring Off Kit finishing at 2 x 2m			✓	-	-	✓	-	-	✓	-
	2.8m			✓	✓	✓	✓	✓	✓	✓	✓
	Extension Ring for 1.8m to 2.8m Circle			✓	✓	✓	✓	✓	✓	✓	✓
	Extension Ring for 2.8m to 3.6m Circle			✓	✓	✓	✓	✓	✓	✓	✓
	2.8m Squaring Off Kit finishing at 3.08 x 3.08m			✓	✓	✓	✓	✓	✓	✓	✓
	2.5m Aztec Circle inc. Squaring Off Kit			✓	-	-	-	-	-	-	-
	SIZE	thickness	additional information								
<b>Octagon</b>	2500 x 2500mm	22mm calibrated		✓	-	-	✓	-	-	✓	-

\*The product sizes and coverage stated are those achieved when laid using a 10mm joint.

Colours vary in all natural stone products so all the images shown are as a guide only.

# Sandstone Collection Gardenstone

Our beautiful hand cut Sandstone paving will always appeal to classic, as well as modern, tastes.

The characterful and stylish Sunset and Raj blends are a hit with those looking for excellent quality and value for money. They are proving popular as they look stylish against any backdrop.



Sandstone Gardenstone - Raj Blend



Sandstone Gardenstone - Sunset Blend

## Sandstone - Gardenstone



Raj Blend



Sunset Blend



Dawn Sky

## GARDENSTONE PRODUCT INFORMATION

	SIZES	m <sup>2</sup> per pack	nos. per 15.87m <sup>2</sup> project pack	nos. per 21.3m <sup>2</sup> project pack	COLOURS		
					Raj Blend	Sunset Blend	Dawn Sky
<b>GARDENSTONE*</b> Variation in thickness: 18-30mm.  Use laying guide Plan E, see page 69.	285 x 285mm	1.06	13	18	-	-	-
	285 x 570mm	2.11	13	18	-	-	-
	432 x 570mm	2.95	12	16	-	-	-
	570 x 570mm	3.9	12	16	-	-	-
	855 x 570mm	5.85	12	16	-	-	-
	Project Pack	15.87m <sup>2</sup>	-	-	-	-	✓
	Project Pack	21.3m <sup>2</sup>	-	-	-	✓	✓

\*The product sizes and coverage stated are those achieved when laid using a 10mm joint.



# Sandstone Collection Edging & Stepping Stones

Our hand-selected edging and stepping stones are a discreet, but smart finishing touch.

The stone is hard-wearing and ages well, giving your paving or pathway a considered look and feel that will only improve with age. Try laying edgings flat and create a low wall.



Colours vary in all natural stone products so all the images shown are as a guide only.



Sandstone

22



Sandstone Edging - Modak Rose



Sandstone Stepping Stones - Modak Rose



**SANDSTONE EDGING & STEPPING STONE PRODUCT INFORMATION**

	SIZES	thickness	COLOURS		
			Modak Rose	York Green	Mint
Edgings	560 x 140mm	Varied 25 - 40mm	✓	✓	✓
Edgings Bullnosed	560 x 140mm	32mm calibrated	✓	✓	✓
Stepping Stones	Random sized	22m calibrated	✓	✓	✓

# Sandstone Collection Serenity Copings

This versatile collection of copings offers you the ability to create a stylish finish to steps, ponds and even swimming pools.

These copings have a fine textured surface that means they fit seamlessly into sleek, contemporary schemes. Combine these pieces with our Artisan Collection on page 31 for a stylish result.



Sandstone

24



Sandstone Serenity Bullnosed Copings - Mint



Sandstone Serenity Bullnosed Copings - Buff Brown



Sandstone Serenity Copings - York Green

Colours vary in all natural stone products so all the images shown are as a guide only.



# Sandstone Collection Bullnosed Flags

Hand-crafted bullnosed flags are a versatile feature, ideally suited to steps, water feature framing, or as a coping stone to complete a walling project.

The riven textured surface and the calibrated thickness make these specialist flags a perfect option when finishing your walling, pond or swimming pool whether in a traditional or modern setting.



Sandstone Bullnosed Flags - Modak Rose



Sandstone

25

## Serenity - Coping & Flag Styles



External Radius Corner  
422 x 422mm



Internal Radius Corner  
560 x 560mm



Double Bullnosed  
275 x 560mm



Single Bullnosed  
422 x 560mm

## BULLNOSED & SERENITY PRODUCT INFORMATION

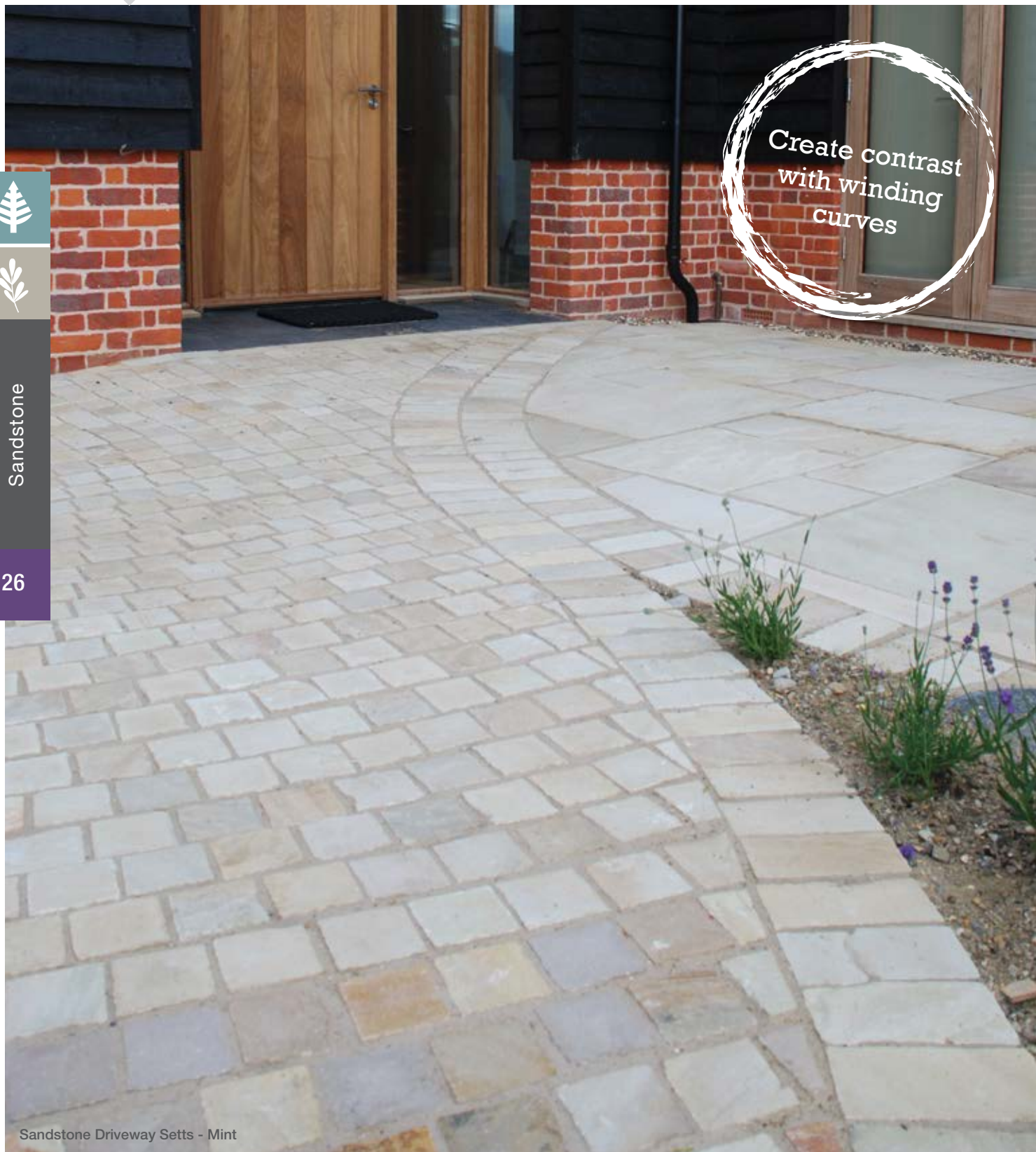
SERENITY COPINGS	SIZES	thickness	COLOURS			
			Buff Brown	Mint	Modak Rose	York Green
External Radius Corner	422 x 422mm	32mm	✓	✓	✓	✓
Internal Radius Corner	560 x 560mm	32mm	✓	✓	✓	✓
Double Bullnosed	275 x 560mm	32mm	✓	✓	✓	✓
Single Bullnosed	422 x 560mm	32mm	✓	✓	✓	✓
<b>SANDSTONE BULLNOSED FLAG</b>	422 x 560mm	32mm	-	✓	✓	✓

Visit [www.globalstonepaving.co.uk](http://www.globalstonepaving.co.uk) to locate your nearest stockist.

# Sandstone Collection Driveway & Pathway Setts

Add textural interest to your driveway or garden path using a collection of rustic setts.

Whether used in winding curves, smart squares or as a feature wall, these Sandstone setts look impeccable. The robust design of these attractive setts make them a charming addition to any cottage-style garden.



Sandstone

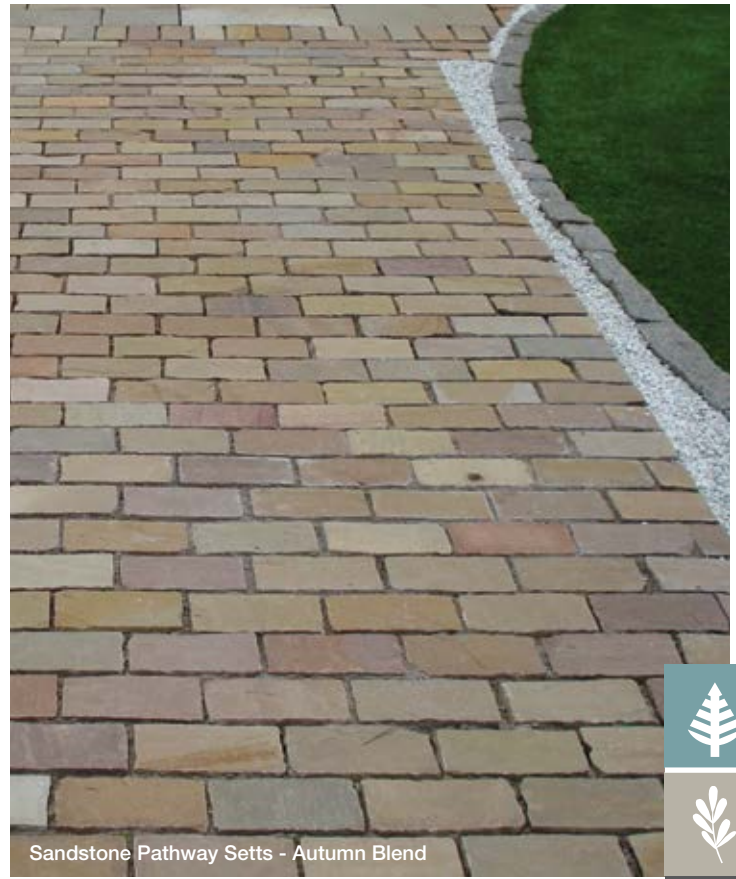
26

Sandstone Driveway Setts - Mint

Colours vary in all natural stone products so all the images shown are as a guide only.



Sandstone Driveway Setts - Autumn Blend

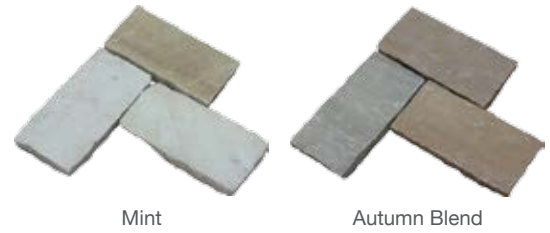


Sandstone Pathway Setts - Autumn Blend



Sandstone - Driveway Setts 100 x 100 x 100/50mm

Sandstone - Pathway Setts 100 x 200mm



Sandstone

27

Sandstone - Pathway Setts 150 x 150mm



DRIVEWAY & PATHWAY PRODUCT INFORMATION

	SIZES	thickness	nos. per m <sup>2</sup>	COLOURS						
				Monsoon	Modak Rose	Mint	York Green	Autumn Blend	Buff Brown	Castle Grey
PATHWAY SETTS*	150 x 150mm	25 - 40mm	38	✓	✓	✓	✓	-	-	-
	100 x 200mm	25 - 40mm	45	-	-	✓	-	✓	-	-
DRIVEWAY SETTS	100 x 100mm	100mm	85	-	-	-	-	✓	-	-
	100 x 100mm	50mm	85	-	-	✓	-	✓	✓	✓

\*NB. The nos. per m<sup>2</sup> includes normal joint width of 15 - 20mm. All dimensions have a tolerance of +/-10mm.

# Sandstone Collection Features

Add a little something extra to your garden with these eye-catching decorative pieces of stone.

Create a feature on your patio, or add a contrasting element in your flower border. Available in a stylish Rainbow Sandstone, these multi-tonal pieces will be the perfect finishing touch for your garden. A smart bench for two will look right at home in traditional or contemporary schemes.



Sandstone

28



Sandstone Concave Sphere - Rainbow



Sandstone Drilled Obelisk - Rainbow



Sandstone Drilled Sphere - Rainbow

Colours vary in all natural stone products so all the images shown are as a guide only.



Sandstone Spheres - Rainbow



Sandstone

29



Sandstone Classic Bench



Granite Bench

### SANDSTONE FEATURES PRODUCT INFORMATION

	SIZES				other	COLOUR
	200mm diameter	300mm diameter	400mm diameter	600mm diameter		Rainbow
Obelisk Drilled Water Feature	-	-	-	-	1000mm tall (base measures 400 x 400mm)	✓
Sandstone Spheres	✓	✓	✓	✓		✓
Sandstone Drilled Water Features	-	✓	✓	✓		✓
Sandstone Concaved Sphere	-	-	✓	✓		✓
Sandstone Classic & Granite Bench					450mm High x 1200mm Wide x 400mm Deep	Classic or Granite

Visit [www.globalstonepaving.co.uk](http://www.globalstonepaving.co.uk) to locate your nearest stockist.

# Verona Internal Collection

Our Verona Collection lets you use some of our popular styles for your internal schemes.

The sleek, thin slabs give you greater flexibility when it comes to internal floors and walls. For laying instructions on our Verona Internal range please visit our website [www.globalstonepaving.co.uk](http://www.globalstonepaving.co.uk)



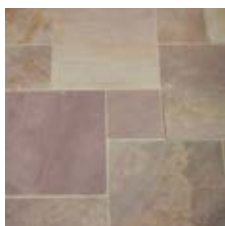


Verona

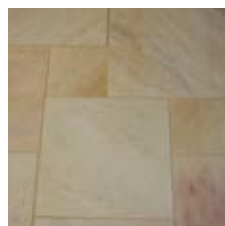
30



## Verona Internal - Sandstone Paving



Modak



Mint

Our Sandstone Verona tiles are ideal for laying indoors as they are thinner than our traditional outdoor range.

The 12mm paving slabs are sleek and contemporary, as well as hardwearing and easy to maintain – the ideal solution for those looking to combine style with performance.

## VERONA PAVING PRODUCT INFORMATION

	SIZES	m <sup>2</sup> per pack	nos. per 7.56m <sup>2</sup> pack	COLOURS	
				Mint	Modak
<b>SANDSTONE*</b> Thickness: 15mm calibrated.	205 x 205mm	0.841	20	-	-
	205 x 410mm	0.841	10	-	-
	410 x 410mm	3.36	20	-	-
	410 x 615mm	2.52	10	-	-
	Project Packs	7.56	-	✓	✓

\*The product sizes and coverage stated are those achieved when laid using a 10mm joint.

Colours vary in all natural stone products so all the images shown are as a guide only.

# Artisan Collection Mirage Paving

A luxurious smooth sandstone, perfectly suited to contemporary designs, indoors and out.

Mirage paving is a versatile honed Sandstone that can be used to enhance any outdoor living space, or inside to transform your kitchen or garden room. The variety of colour options make this practical stone a popular choice with those with an eye for quality.



Smooth  
and sleek  
surface finish



Artisan

31

Artisan Mirage - York Green



Artisan Mirage - Mint



### Artisan Mirage Paving



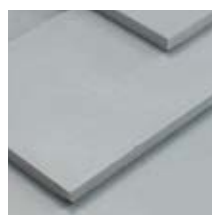
Mint



York Green



Modak Rose



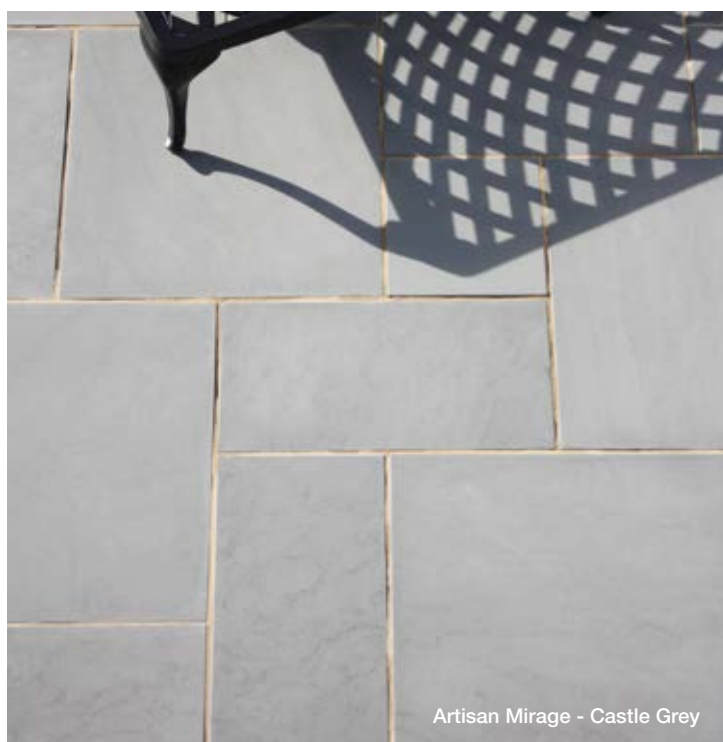
Castle Grey

Artisan

32



Artisan Mirage - Modak Rose



Artisan Mirage - Castle Grey

Colours vary in all natural stone products so all the images shown are as a guide only.



# Artisan Collection Mirage Setts & Phantasy Vine

Add a little something extra to your garden with these eye-catching decorative pieces of stone.

The mirage paving and pathway setts are stylish and hard-wearing. The cool colour palette looks fabulous in small courtyard gardens while the Phantasy Vine feature is ideal as a striking patio.



Artisan Mirage - York Green



Artisan

33



Artisan Mirage Paving & Pathway - Modak Rose

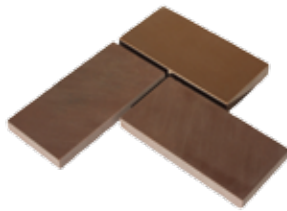


Artisan Mirage Pathway Setts - York Green

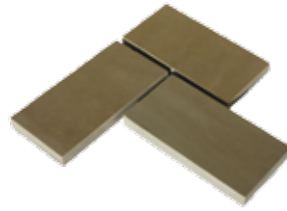


Phantasy Vine - York Green

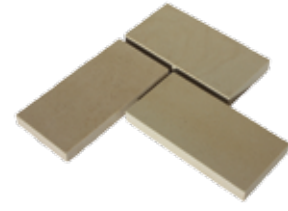
Artisan Mirage - Pathway Setts



Modak Rose



York Green



Mint

MIRAGE PAVING & PATHWAY PRODUCT INFORMATION

	SIZES	SINGLE SIZE PACKS				COLOURS			
		slabs per m <sup>2</sup>	m <sup>2</sup> per pack	slabs per pack	nos. per project pack 7.3m <sup>2</sup>	Mint	York Green	Modak Rose	Castle Grey
<b>PAVING*</b> Thickness: 20mm calibrated. Use laying guides Plan F & H, see pages 69 & 70.	285 x 285mm	12.31	15.43	190	12	✓	✓	✓	-
	285 x 570mm	6.15	14.62	90	13	✓	✓	✓	-
	570 x 570mm	3.08	14.62	45	13	✓	✓	✓	-
	Project Pack	-	7.3m <sup>2</sup>	-	-	✓	✓	✓	✓
		<b>SIZES</b>		<b>nos. per m<sup>2</sup></b>					
		<b>PHANTASY VINE</b> Thickness: 20mm calibrated.		1995 x 1995mm		-	✓	-	-
		<b>PATHWAY SETTS</b> Thickness: 20mm calibrated.		100 x 100 x 20mm thick		85	✓	✓	✓
				100 x 200 x 20mm thick		45	✓	✓	✓

\*The product sizes and coverage stated are those achieved when laid using a 10mm joint.

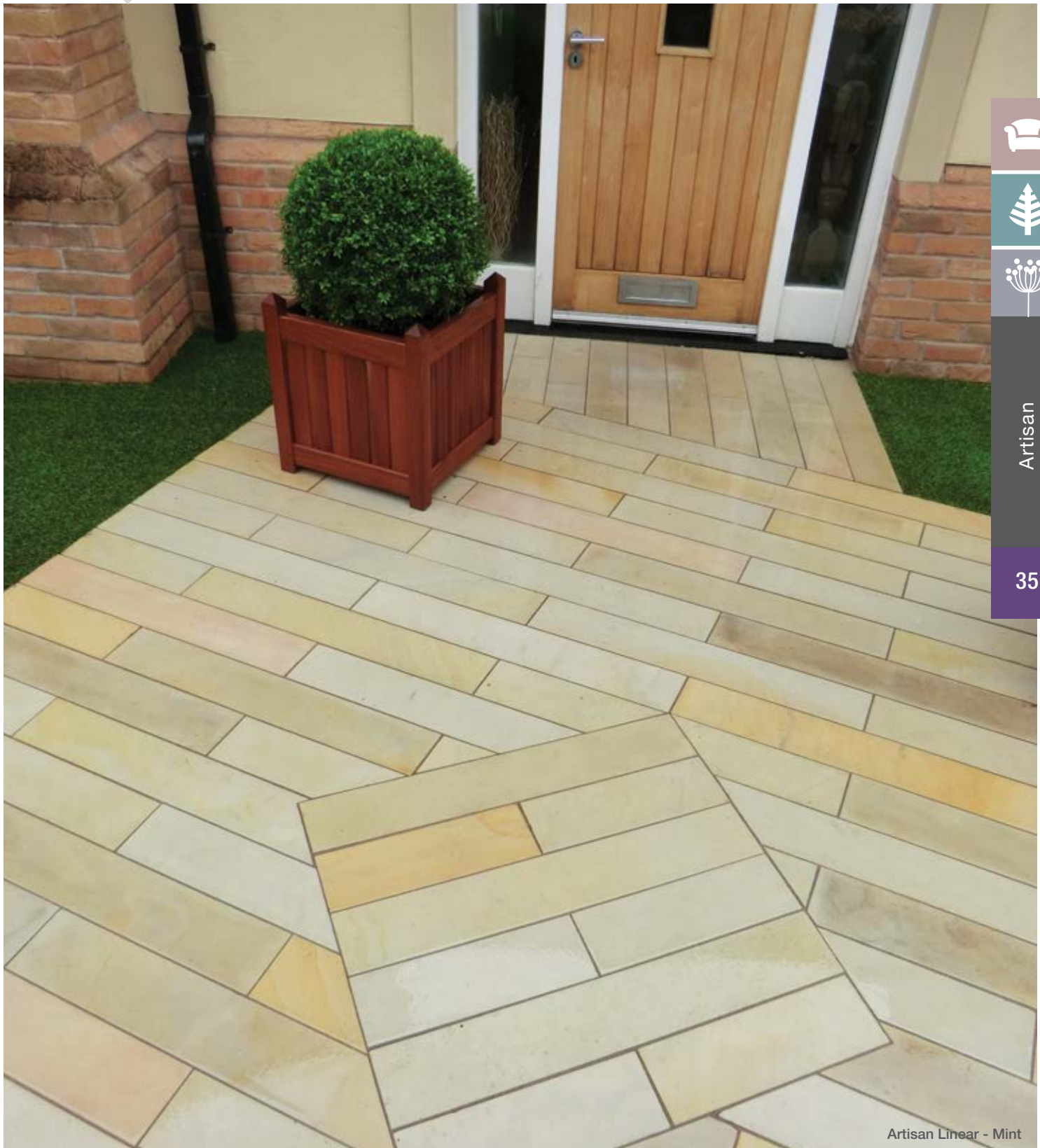


# Artisan Collection Linear Paving

Used inside or outside, the elongated proportions of the Linear paving can create a lengthening or widening effect.

Used inside or out, the elongated proportions of the Linear paving naturally create a silky, sophisticated look. The clean colourways and the impeccable quality combine to great effect, producing striking patio areas and inviting pathways.

Use the neat lines to transform once dull areas with creative angular features.




Artisan

35

Artisan Linear - Mint

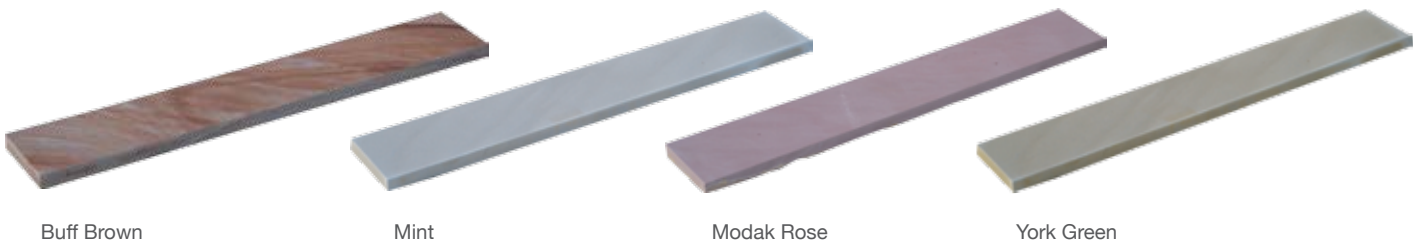


Artisan Linear - Buff Brown




  
 Artisan
   
 36

Artisan - Linear Paving



Buff Brown

Mint

Modak Rose

York Green

LINEAR PRODUCT INFORMATION

LINEAR PAVING	SIZES	nos. per m <sup>2</sup>	nos. per pack	COLOURS			
				Buff Brown	Mint	Modak Rose	York Green
Thickness: 25mm calibrated.	140 x 845mm	8.45	60	✓	✓	✓	✓

Colours vary in all natural stone products so all the images shown are as a guide only.

# Artisan Collection Serenity Paving

Opt for this smooth and elegant paving when creating attractive peaceful schemes.

The fine textured surface of the Serenity paving has become a design classic for contemporary schemes thanks to its luxurious look and feel. Turn to page 24 to see how you can complete your design with our range of copings.



Artisan

37

Artisan Serenity - Buff Brown



Artisan Serenity - York Green



Artisan

38



Artisan Serenity - Sandalwood



Artisan Serenity - Monsoon

Artisan - Serenity Paving & Pathway Sets



Buff Brown



York Green



Sandalwood



Monsoon



Pathway Setts - Buff Brown



Pathway Setts - York Green

Colours vary in all natural stone products so all the images shown are as a guide only.

# Artisan Collection Serenity Quartzite Paving

A unique new stone for 2014.

The new Quartzite paving is the latest addition to our Artisan Collection. The seamless appearance of this fine textured surface paving will prove popular with lovers of all things modern, as well as those looking to create a cool contrast between old and new in your garden.



Artisan Serenity Quartzite - Willow



Artisan

39

## SERENITY & QUARTZITE PAVING PRODUCT INFORMATION

	SIZES	slabs per m <sup>2</sup>	nos. per m	SINGLE SIZE PACKS		nos. per project pack 7.3m <sup>2</sup>	COLOURS				
				m <sup>2</sup> per pack	slabs per pack		Buff Brown	York Green	Sandalwood	Monsoon	Quartzite Willow
<b>PAVING*</b> Thickness: 20mm calibrated. Use laying guides Plans B & F, see pages 67 & 69.	285 x 285mm	12.31	-	15.43	190	12	✓	✓	-	-	-
	285 x 570mm	6.15	-	14.62	90	13	✓	✓	-	-	-
	570 x 570mm	3.08	-	14.62	45	13	✓	✓	-	-	-
	855 x 570mm	2.05	-	11.7	24	-	✓	✓	-	-	-
	Project Pack	-	-	7.3m	-	-	✓	✓	✓	✓	✓
<b>PATHWAY SETTS</b> Thickness: 20mm calibrated.	100 x 100 x 20mm thick	-	85	-	-	-	✓	✓	-	-	-
	100 x 200 x 20mm thick	-	45	-	-	-	✓	✓	-	-	-

\*The product sizes and coverage stated are those achieved when laid using a 10mm joint.

Visit [www.globalstonepaving.co.uk](http://www.globalstonepaving.co.uk) to locate your nearest stockist.

# Petrous Collection Paving

Meaning 'stone-like', Petrous is a strong, stylish and timeless collection.

This range is as practical as it is attractive with colour variations ranging from smart Anthracite greys to warm creamy hues. Uniform colouring gives you the flexibility to shape your indoor or outdoor space as you wish.



Petrous

40



Petrous - Anthracite

Colours vary in all natural stone products so all the images shown are as a guide only.





Petrous - Anthracite



Petrous

41



Petrous - Anthracite



Petrous - Anthracite with Wheat inset

PETROUS PAVING PRODUCT INFORMATION

PAVING	SIZES	nos. per pack	m <sup>2</sup> per pack	COLOURS	
				Wheat	Anthracite
Thickness: 20mm	600 x 600mm	64	23.04	✓	✓

# Marble Collection Morning Mist Paving

An attractive stone that effortlessly conveys quality and style.

This hard wearing marble has a smooth surface and subtle veining which will give a unique contemporary finish to any garden design. Originally limestone, marble is known for its distinctive and original colour variations and looks right at home in a kitchen or hallway.



  
  
  
 Marble  
 42

Marble - Morning Mist

Marble - Morning Mist

## MORNING MIST PRODUCT INFORMATION

	SIZES	m <sup>2</sup> per pack	nos. per 7.2m <sup>2</sup> project pack	COLOUR
				Morning Mist
<b>PAVING</b> Thickness: 30mm. Use laying guide Plan C, see page 68.	200 x 200mm	0.8	20	-
	200 x 400mm	0.8	10	-
	400 x 400mm	3.2	20	-
	400 x 600mm	2.4	10	-
	Project Pack	-	7.2m <sup>2</sup>	✓

Colours vary in all natural stone products so all the images shown are as a guide only.

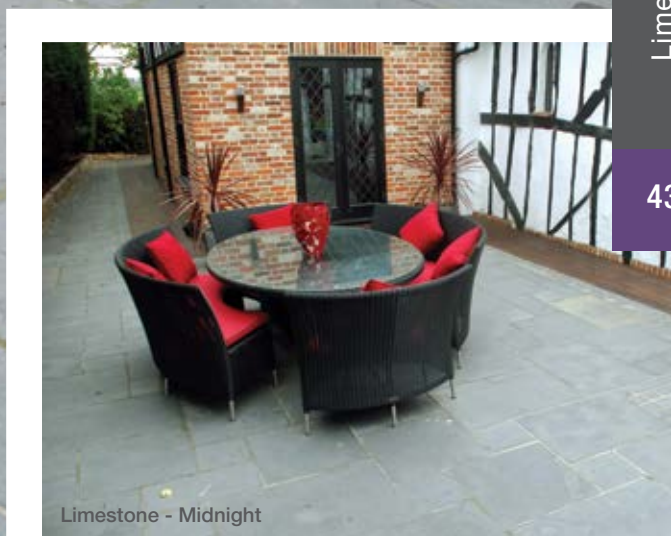
# Limestone Collection Midnight Paving

Stylish Limestone paving with hand cut edges and a desirably subtle riven surface texture.

An attractive durable Limestone, Midnight paving has a variable riven appearance. The dark grey colour naturally tones down over time as the product weathers to a chic lighter grey, making it ideal for an elegant outside living space.



Limestone - Midnight



Limestone - Midnight



Limestone

43

## LIMESTONE MIDNIGHT PAVING PRODUCT INFORMATION

	SIZES	m <sup>2</sup> per pack	slabs per m <sup>2</sup>	project pack 13.65m <sup>2</sup>	SINGLE SIZE PACKS	
					m <sup>2</sup> per pack	slabs per pack
<b>MIDNIGHT PAVING*</b> Variation in thickness: 25-40mm. Use laying guides Plan B, see page 67.	285 x 285mm	1.2	-	15	-	-
	285 x 570mm	2.42	-	15	-	-
	570 x 570mm	4.21	-	13	-	-
	855 x 570mm	5.82	-	12	-	-

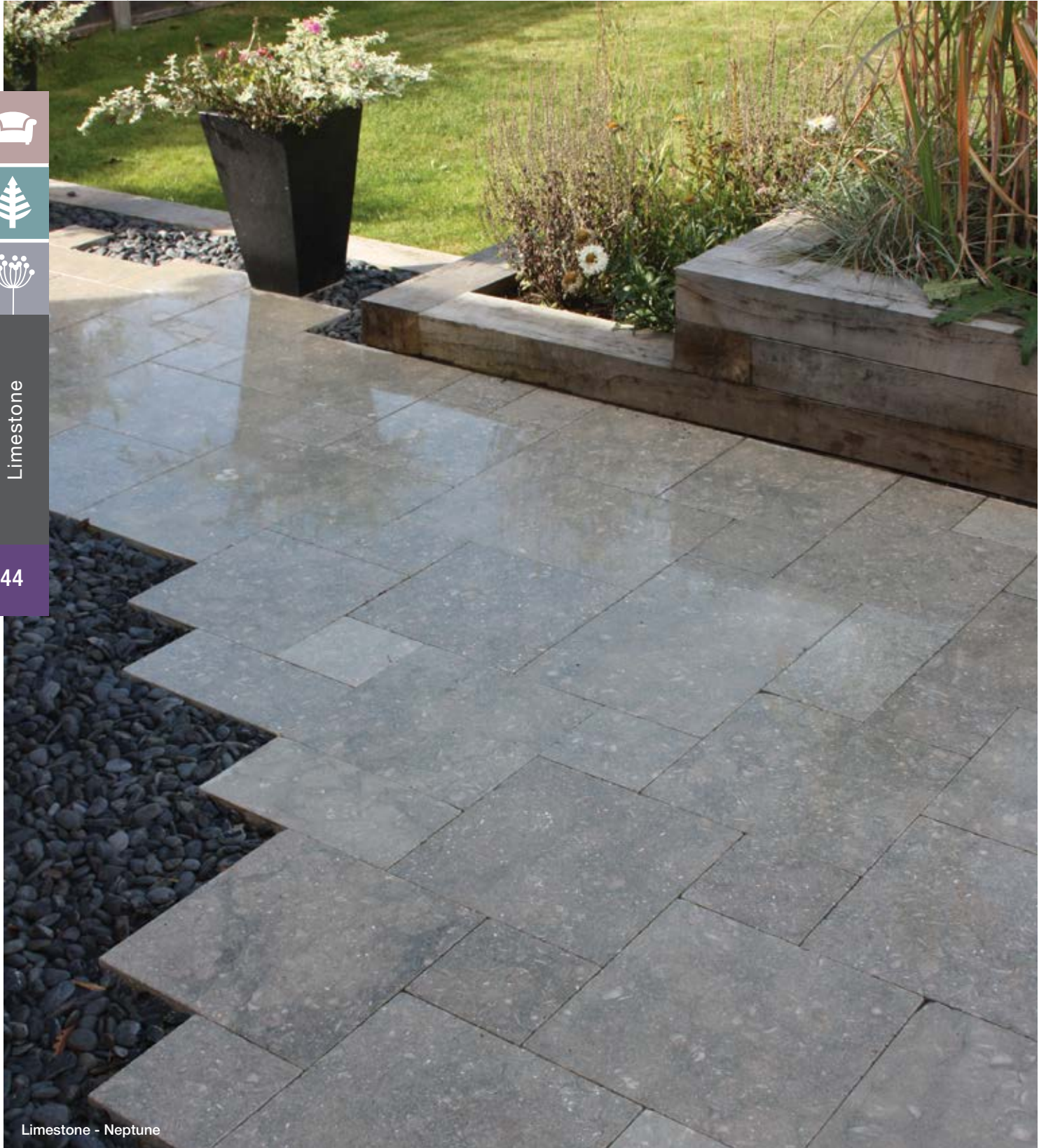
\*The product sizes and coverage stated are those achieved when laid using a 10mm joint.

Visit [www.globalstonepaving.co.uk](http://www.globalstonepaving.co.uk) to locate your nearest stockist.

# Limestone Collection Neptune Paving

This soft and luxurious Limestone boasts a charming, natural speckled effect.

The various paving sizes create a smart finished look that works well indoors and out. The naturally occurring colour variations will be unique to your scheme and will work together beautifully.



- 
- 
- 

Limestone

44

Limestone - Neptune

# Limestone Collection Golden Glory Paving

The warm subtle shades and aged-dressed edges ensure this versatile paving brings a classic, timeless charm.

The natural texture of Limestone is full of character and creates the perfect backdrop for creative planting or garden furniture.



Limestone

45

Limestone - Golden Glory

## NEPTUNE & GOLDEN GLORY PRODUCT INFORMATION

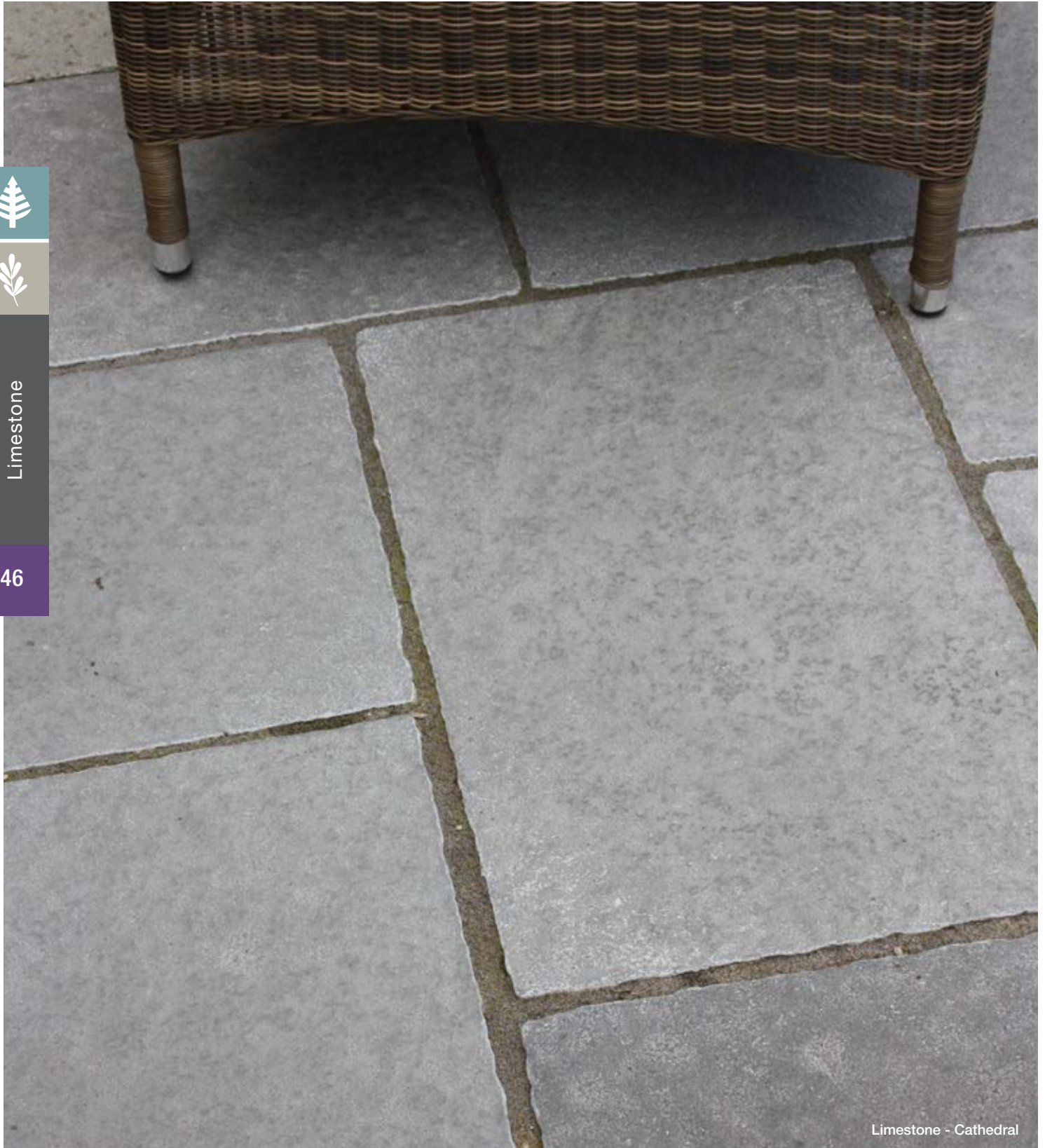
PAVING	SIZES	m <sup>2</sup> per pack	nos. per 7.2m <sup>2</sup> project pack	COLOURS	
				Golden Glory	Neptune
Thickness: 30mm. Use laying guide Plan C, see page 68.	200 x 200mm	0.8	20	-	-
	200 x 400mm	0.8	10	-	-
	400 x 400mm	3.2	20	-	-
	400 x 600mm	2.4	10	-	-
	Project Pack	-	7.2m <sup>2</sup>	✓	✓

Visit [www.globalstonepaving.co.uk](http://www.globalstonepaving.co.uk) to locate your nearest stockist.

# Limestone Collection Cathedral & Honey Blend Paving

Our Cathedral and Honey Blend will give a stylish look to your patio.

Honey Blend has a natural quarried look whilst the Cathedral boasts an elegant time worn appearance. Lay in smart coursed lines, rather than a random pattern for striking results.



Limestone

46

Limestone - Cathedral

Colours vary in all natural stone products so all the images shown are as a guide only.



Limestone - Honey Blend



Limestone

47

Limestone - Cathedral & Honey Blend



Cathedral



Honey Blend

CATHEDRAL & HONEY BLEND PRODUCT INFORMATION

	SIZES	m <sup>2</sup> per pack	nos. per 14.18m <sup>2</sup> pack	nos. per 9.46m <sup>2</sup> pack
<b>HONEY BLEND</b> Thickness: 22mm calibrated.	300 x 450mm	2.03	15	-
	450 x 450mm	3.04	15	-
	600 x 450mm	4.05	15	-
	750 x 450mm	5.06	15	-
<b>CATHEDRAL</b> Thickness: 22mm calibrated.	300 x 450mm	1.35	-	10
	450 x 450mm	2.03	-	10
	600 x 450mm	2.7	-	10
	750 x 450mm	3.38	-	10

Visit [www.globalstonepaving.co.uk](http://www.globalstonepaving.co.uk) to locate your nearest stockist.

# Travertine Collection Antiqued Paving

The stone has been tumbled, which provides a warm natural look.

Travertine is a beautifully aged natural stone with an unmistakable character. First used by the Romans, its Mediterranean feel is undeniable. It will look warm and inviting when used in your kitchen, or outside, in the shadows of a grape vine.



Undeniably  
warm and  
inviting

Travertine Antiqued - Warm Walnut

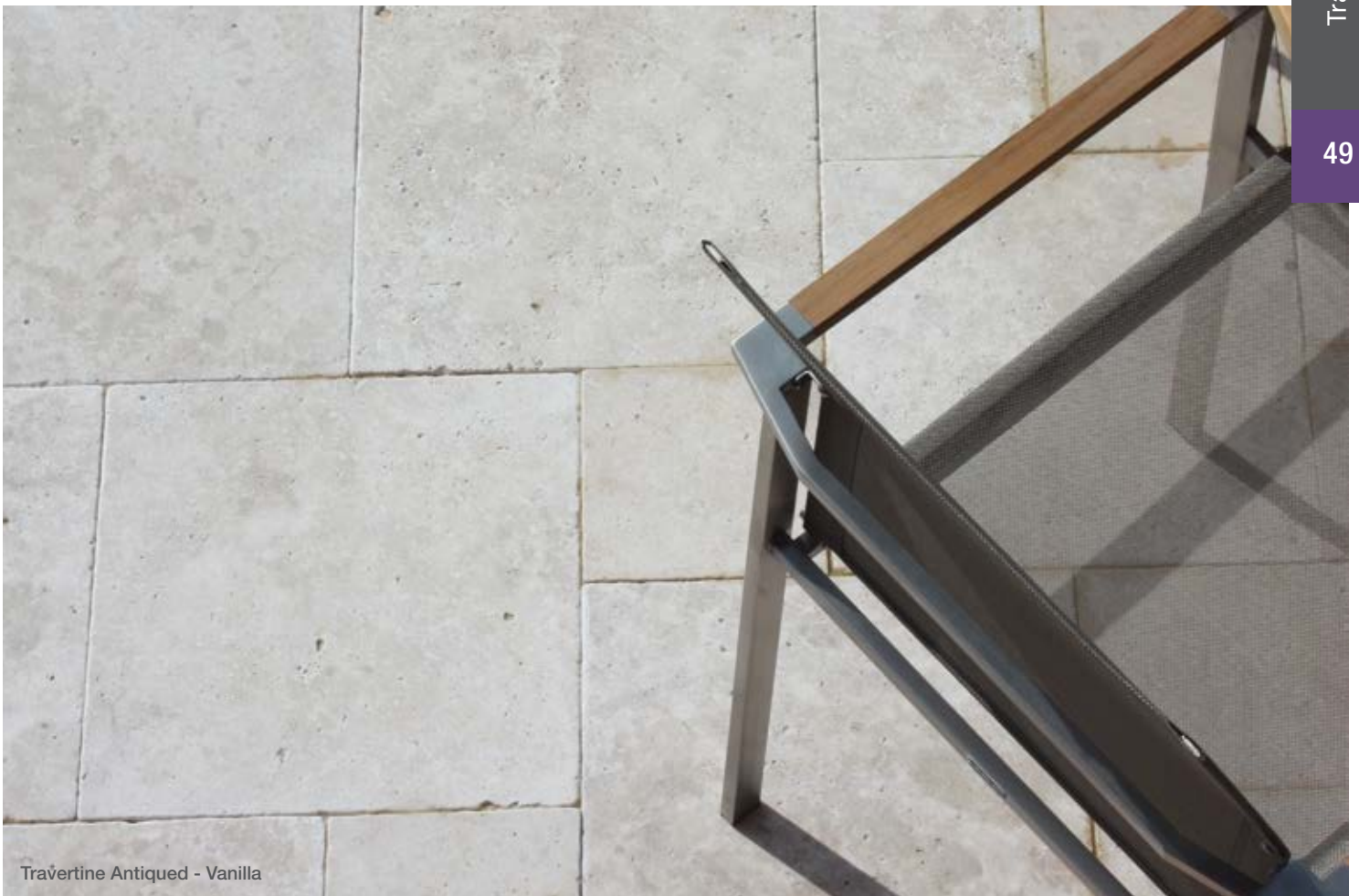




Travertine Antiqued - Warm Walnut



Travertine



Travertine Antiqued - Vanilla



Travertine Antiqued - Pewter



### Travertine - Antiqued Paving



Warm Walnut



Vanilla



Pewter



Cappuccino



Travertine Antiqued - Cappuccino

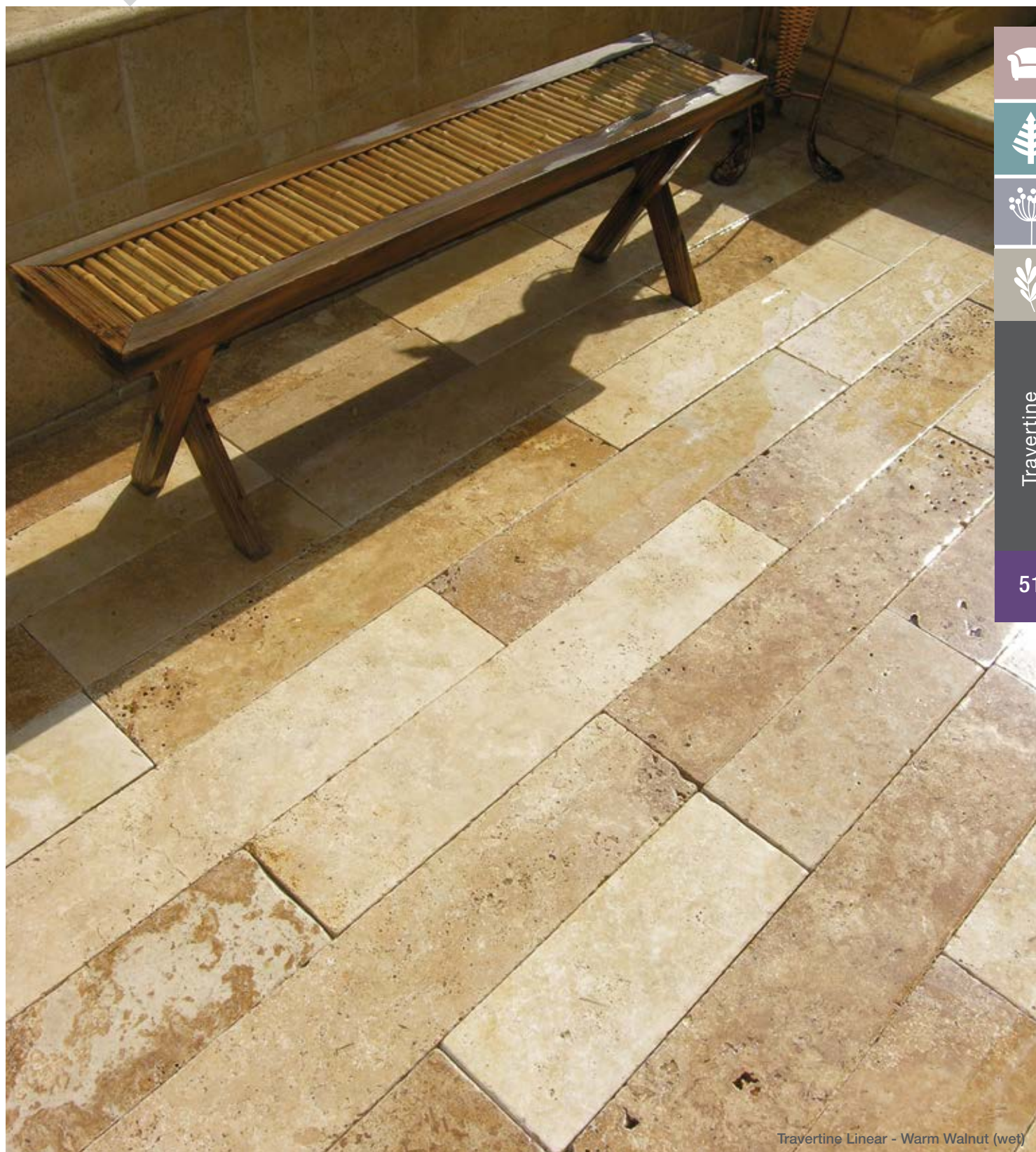
Travertine

50

# Travertine Collection Linear Paving

Create a calm and elegant scheme, indoors or out, using this warm stone.

Tumbled Travertine has an appealing aged look and can add a subtle sense of character to your home or garden. The Linear paving will really come alive when used alongside our luxurious Antiqued Travertine.



Travertine

51

Travertine Linear - Warm Walnut (wet)

# Travertine Collection Internal Tiling

Bring a historic stone indoors and create a timeless look.

Travertine is stone that exudes character, largely because of its links with architecture in ancient Rome. Our new internal Travertine tiles allow homeowners to bring the warm hues synonymous with al fresco dining indoors and create classic schemes that will look good for years to come.



Travertine

52



Verona Internal Travertine - Classic Light

Verona Internal Travertine Paving

Honed / Filled

Tumbled / Unfilled

## TRAVERTINE PAVING PRODUCT INFORMATION

	SIZES	slabs per m <sup>2</sup>	m <sup>2</sup> per project pack	SINGLE SIZE BULK PACKS			COLOURS			
				m <sup>2</sup> per pack	slabs per pack	nos. per project pack 7.2m <sup>2</sup>	Warm Walnut	Vanilla	Cappuccino	Pewter
<b>ANTIQUED</b> Thickness: 30mm calibrated. Use laying guide Plan C, see page 68.	200 x 200mm	25	-	10.56	264	20	✓	-	-	-
	Project Pack	-	0.8	-	-	20	-	✓	✓	✓
	200 x 400mm	12.5	-	10.56	132	10	✓	-	-	-
	Project Pack	-	0.8	-	-	10	-	✓	✓	✓
	400 x 400mm	6.25	-	10.56	66	20	✓	-	-	-
	Project Pack	-	3.2	-	-	20	-	✓	✓	✓
	400 x 600mm	4.17	-	7.68	32	10	✓	-	-	-
Project Pack	-	2.4	-	-	10	✓	✓	✓	✓	
<b>LINEAR PAVING</b>	800 x 150 x 30mm	8.33	7.2	-	60	-	✓	-	-	-

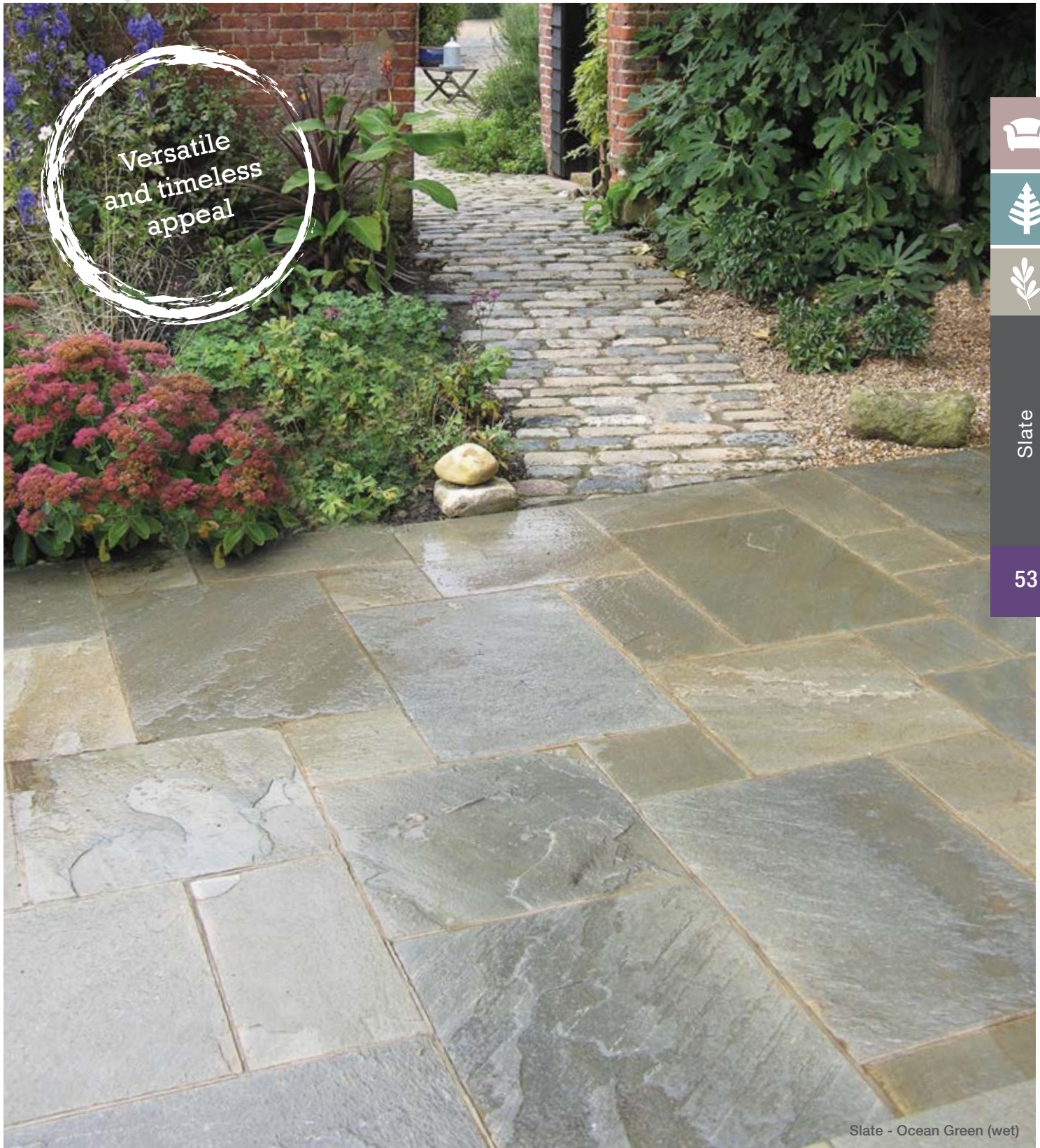
	SIZES	m <sup>2</sup> per module	HONED	TUMBLED	modules per pallet	COLOURS
			nos. per 1.48m <sup>2</sup> module	nos. per 1.48m <sup>2</sup> module		Classic Light
<b>TRAVERTINE TILES</b> Thickness: 12mm calibrated.	205 x 205mm	0.16	4	4	26	✓
	205 x 410mm	0.16	2	2	26	✓
	410 x 410mm	0.66	4	4	26	✓
	410 x 615mm	0.5	2	2	26	✓

Colours vary in all natural stone products so all the images shown are as a guide only.

# Slate Collection Paving

Natural slate is beautifully distinctive and eternally desirable, with a subtle appearance that exudes high quality.

Our collection of hand-selected premium slate paving is versatile, having been used in luxurious kitchen makeovers as well as in modern indoor swimming pools. Its dense and durable surface has a deep, rich colouring – making it an obvious choice for stylish gardens.



Versatile  
and timeless  
appeal



Slate

53

Slate - Ocean Green (wet)



Slate - Carbon Grey



Slate

54



Slate - Carbon Grey



Slate - Ocean Green

Colours vary in all natural stone products so all the images shown are as a guide only.



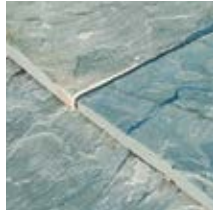
Slate - Rustic



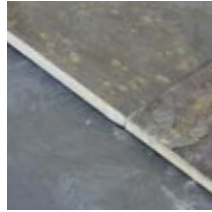
Slate - Paving & Cobbles



Carbon Grey



Ocean Green



Rustic



Ocean Green Cobbles



Slate - Rustic

# Slate Collection Cobble Paving

Slate Cobble paving is a natural choice for those looking for a durable, but attractive, paving solution.

The Antiqued Ocean Green Slate Cobbles are calibrated on the base to provide a consistent thickness, making the laying process much quicker and easier. Cobbles provide a unique robust alternative for your driveway and courtyard designs.



Slate Cobbles - Ocean Green

## SLATE PRODUCT INFORMATION

	project packs	SIZES	m <sup>2</sup> per pack	nos. per 14.70m <sup>2</sup> project pack	nos. per 10.71m <sup>2</sup> project pack	COLOURS		
						Ocean Green	Carbon Grey	Rustic Slate
<b>PAVING*</b> Variation in thickness: 25-30mm.	305 x 305mm	-	1.3	14	-	-	-	-
	305 x 610mm	-	2.23	12	-	-	-	-
	610 x 610mm	-	4.47	12	-	-	-	-
	915 x 610mm	-	6.7	12	-	-	-	-
	Project Pack	-	-	14.70m <sup>2</sup>	-	✓	✓	✓
<b>COBBLES</b> Thickness: 50mm Use laying guide Plan D, see page 68.	-	200 x 150mm	1.23	-	41	-	-	-
	-	200 x 200mm	2.28	-	57	-	-	-
	-	300 x 200mm	2.28	-	38	-	-	-
	-	300 x 400mm	4.92	-	41	-	-	-
	Project Pack	-	-	-	-	10.71m <sup>2</sup>	✓	-

\*The product sizes and coverage stated are those achieved when laid using a 10mm joint.

Colours vary in all natural stone products so all the images shown are as a guide only.



# Granite Collection Polar Paving

Granite Polar paving provides a stylish fine textured look, best suited when used in contemporary garden designs.

The cool silver grey and the darker graphite hues offer endless design opportunities either on their own, or as a contrast with other paving colours and textures. Its ageless texture and colouring will make your outside space stand the test of time.



Granite Polar - Silver Grey



Granite

57

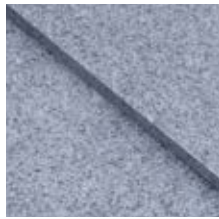


Granite Polar - Silver Grey and Graphite Grey



Granite Polar - Silver Grey

### Granite Polar - Paving



Silver Grey



Graphite Grey



Granite Polar - Silver Grey



# Granite Collection Polar Cobble

The subtle natural shades provide an attractive solution for modern hard landscaping projects.

This eye-catching collection of authentic Granite Cobbles will add a stylish new look to driveways or paths and can be used as a contrasting border for a paved area. They are attractive and durable, and look really effective in more traditional gardens.



Granite Cobbles - Polar Sun

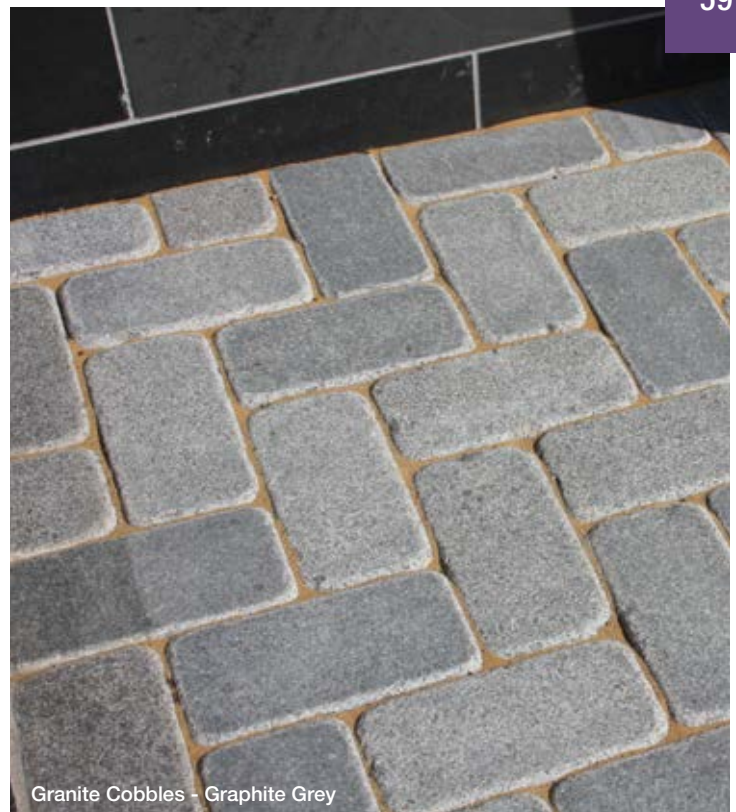


Granite

59



Granite Cobbles - Polar Sun



Granite Cobbles - Graphite Grey

# Granite Collection Polar Setts

These distinctive setts will add interest to your driveway, courtyard or patio design.

Stylish Granite setts will enhance the natural appearance of any hard landscaping design. The variety of colours, together with the attractive rustic texture of the setts, make this product a popular choice for smart borders and eye-catching features.



Granite

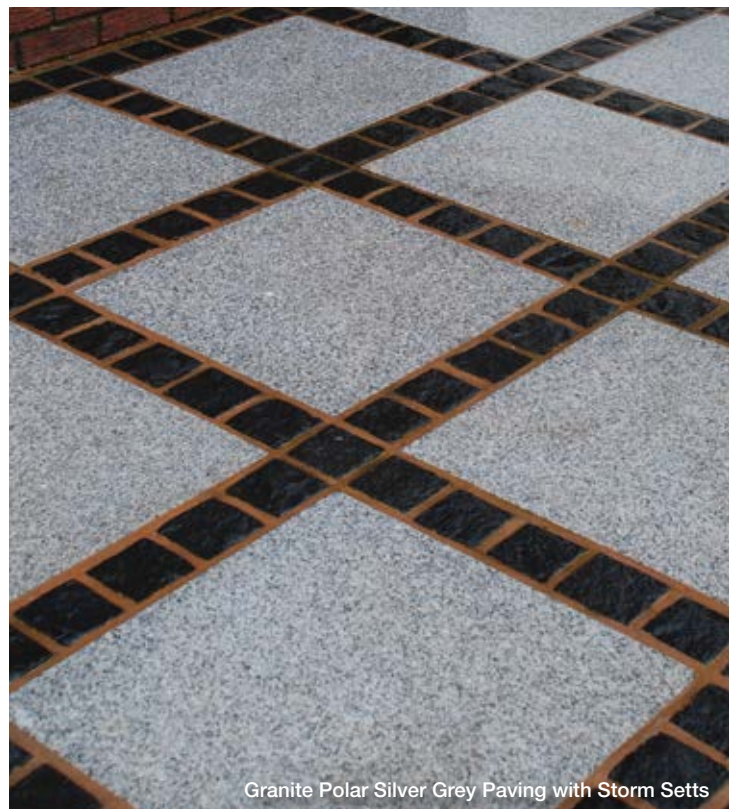
60



Granite Polar Setts - Silver Grey



Granite Polar Setts - Silver Grey



Granite Polar Silver Grey Paving with Storm Setts

Colours vary in all natural stone products so all the images shown are as a guide only.



Granite Polar Setts - Rose



Granite Polar Setts - Silver Grey

Granite - Polar Cobbles



Silver Grey



Polar Sun



Graphite Grey

Granite - Polar Setts 100 x 100 x 50/100mm



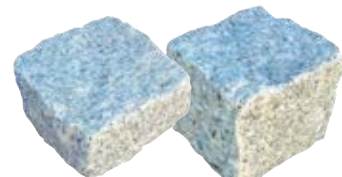
Rose



Soft Gold



Storm



Silver Grey



GRANITE PRODUCT INFORMATION

	SIZES	slabs per m <sup>2</sup>	m <sup>2</sup> per pack	SINGLE SIZE PACKS				COLOURS					
				m <sup>2</sup> per pack	slabs per pack	nos. per pack	nos. per m <sup>2</sup>	Silver Grey	Graphite Grey	Polar Sun	Rose	Soft Gold	Storm
<b>PAVING</b> Thickness: 25mm Use laying guides Plans F & G, see pages 69 & 70.	305 x 305mm	10.75	-	13.4	144	-	-	✓	✓	-	-	-	-
	305 x 610mm	5.37	-	13.4	72	-	-	✓	✓	-	-	-	-
	610 x 610mm	2.67	-	13.4	36	-	-	✓	✓	-	-	-	-
	915 x 610mm	1.79	-	13.4	24	-	-	✓	✓	-	-	-	-
<b>COBBLES</b> Thickness: 50mm	200 x 100 X 50mm	-	8	-	-	400	50	✓	✓	✓	-	-	-
<b>SETTS</b>	100 x 100 x 100mm	-	-	-	-	400	85	✓	-	-	-	-	-
	100 x 100 x 50mm	-	-	-	-	700	85	✓	-	-	✓	✓	✓

# Clay Paver Collection

Choose traditional clay pavers with a distinctive appearance which improve with age.

The classic collection of clay pavers provide a timeless rustic appearance to any traditional cottage-style garden design. The combination of clay pavers and Global Sandstone provide endless creative design possibilities.



Create the  
perfect  
garden path



Clay Pavers

62

Clay Paver - Rose Cottage

Colours vary in all natural stone products so all the images shown are as a guide only.



Clay Paver - Rose Cottage



Clay Paver - Tudor



Clay Paver - Mellow Blend



Clay Pavers



Rose Cottage



Mellow Blend



Tudor



Rustic Noir

CLAY PAVER PRODUCT INFORMATION

CLAY PAVERS	SIZES	nos. per pack	COLOURS			
			Rose Cottage	Mellow Blend	Tudor	Rustic Noir
	210 x 100 x 50mm	720	✓	-	✓	-
	210 x 100 x 50mm	800	-	✓	-	✓

# Yorkstone Collection Paving

The principal stone of British paving for decades, now readily available in easy to lay sawn flags.

This elegant authentic Yorkstone provides all the characteristics you would expect from a modern, diamond sawn paving. Yorkstone has been used and loved for decades adding character to both contemporary and traditional designs.



Yorkstone - Classic York

## Yorkstone Paving



Classic York

### YORKSTONE PAVING PRODUCT INFORMATION

PAVING	SIZES	nos. per project pack	COLOURS
			Classic York
Thickness: 50mm calibrated.	300 x 450mm	6	-
	450 x 450mm	12	-
	600 x 450mm	6	-
	900 x 450mm	8	-
	Project Pack	-	✓

Colours vary in all natural stone products so all the images shown are as a guide only.



Yorkstone

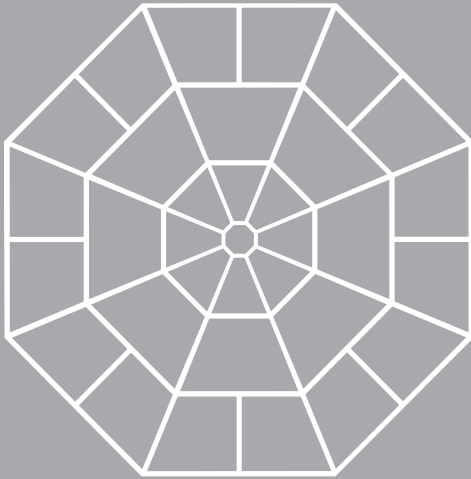
64



# Laying Guides | Sandstone Feature Designs

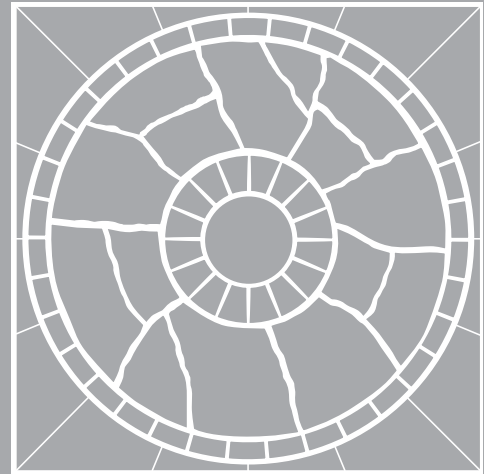
A guide to the sizes and designs of Sandstone features in the Global Stone Paving Collection.

These Laying Guides are illustrated examples to assist you in creating exciting and attractive designs.



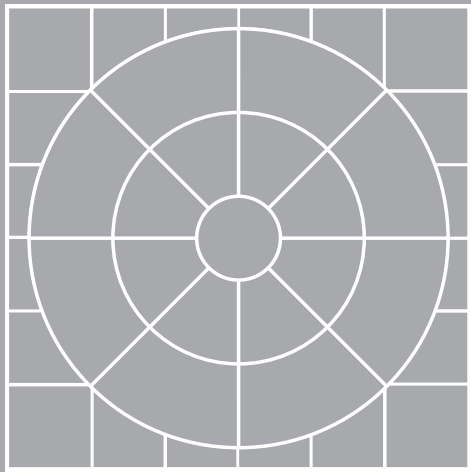
## Global Sandstone Octagon

2.5m Octagon Kit



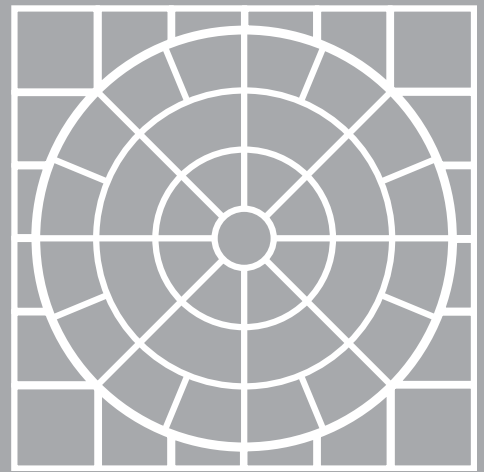
## Global Sandstone Aztec Circle

2.5 x 2.5m including Squaring Off Kit



## 1.8m Diameter Circle with Squaring Off Kit

Finished Size: 2 x 2m  
4 Corners per Kit



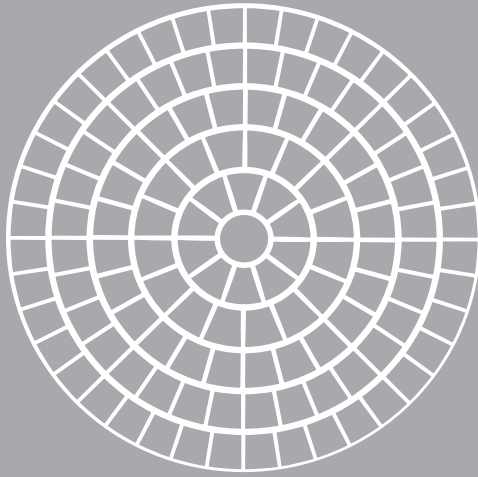
## 2.8m Diameter Circle with Squaring Off Kit

Finished Size: 3.08 x 3.08m  
4 Corners per Kit

# Laying Guides | Sandstone Feature Designs

A guide to the sizes and designs of Sandstone features in the Global Stone Paving Collection.

These Laying Guides are illustrated examples to assist you in creating exciting and attractive designs.



## Old Rectory Cobble Circle

1.8m Diameter Circle Kit



## Global Sandstone

1.8m Diameter Circle Kit



## Global Sandstone

2.8m Diameter Circle Kit



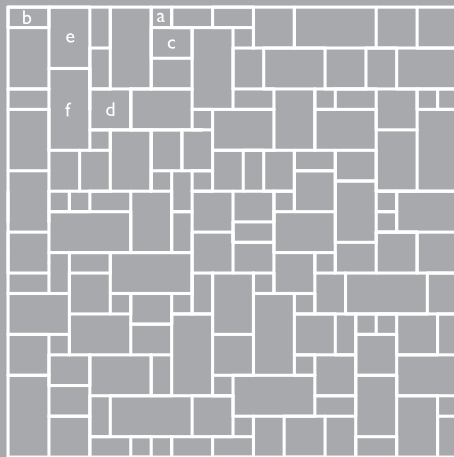
## Circle Extension Kit

To take circle from 2.8m Diameter to 3.6m

# Laying Guide | Plan A

Laying pattern for Global Sandstone utilising all six sizes.

These Laying Guides are illustrated examples to assist you in creating exciting and attractive designs.

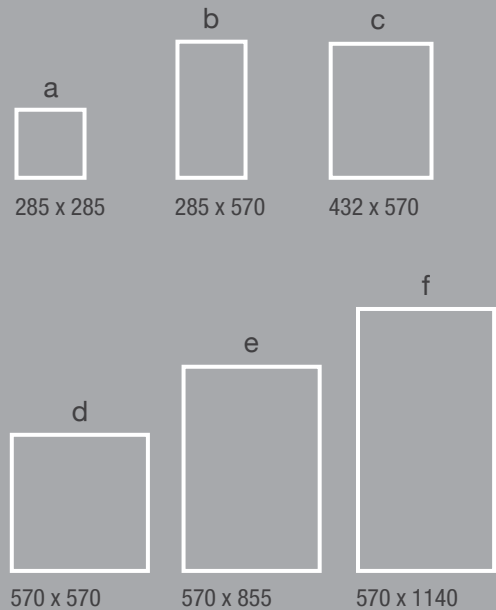


Single Size Paving Laying Plan

**SIZES**

- a) 285 x 285mm
- b) 285 x 570mm
- c) 432 x 570mm
- d) 570 x 570mm
- e) 855 x 570mm
- f) 1140 x 570mm

(sizes in mm):



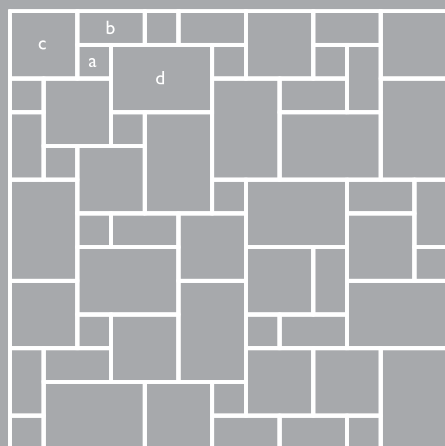
Laying pattern for Global Sandstone Paving utilising all six sizes.

The product sizes and coverage stated are those achieved when laid using a 10mm joint.

# Laying Guide | Plan B

Laying pattern for Old Rectory, Midnight Limestone and Global Sandstone Paving 13.65m<sup>2</sup> Project Pack (four sizes).

These Laying Guides are illustrated examples to assist you in creating exciting and attractive designs.

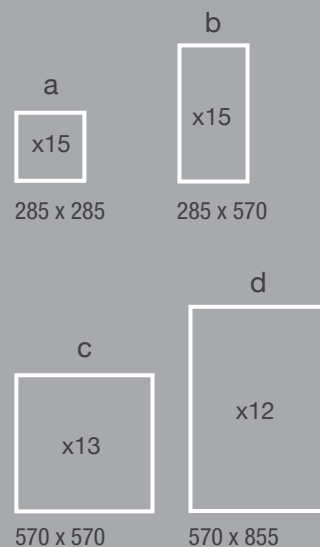


Project Pack Laying Plan

**SIZES**

- a) 285 x 285mm
- b) 285 x 570mm
- c) 570 x 570mm
- d) 855 x 570mm

13.65m<sup>2</sup> Project Pack Contains (sizes in mm):



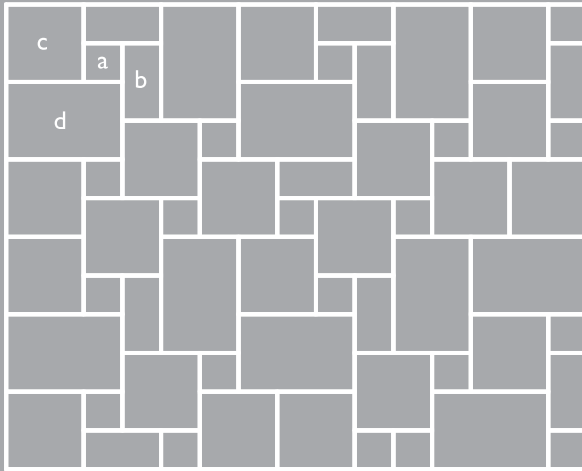
Laying pattern for Global Sandstone Paving 13.65m<sup>2</sup> Project Pack.

The product sizes and coverage stated are those achieved when laid using a 10mm joint.

## Laying Guide | Plan C

Laying pattern for Morning Mist, Neptune, Golden Glory and Travertine 7.2m<sup>2</sup> Project Packs.

These Laying Guides are illustrated examples to assist you in creating exciting and attractive designs.



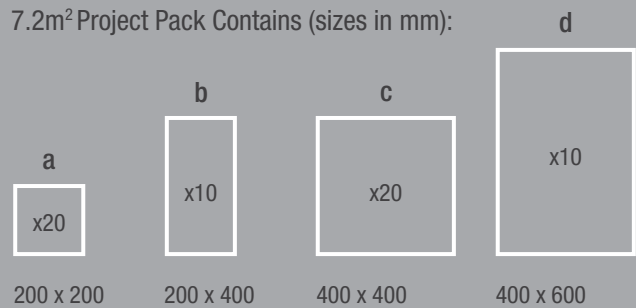
Project Pack  
Laying Plan

SIZES

- a) 200 x 200mm
- b) 200 x 400mm
- c) 400 x 400mm
- d) 400 x 600mm

Laying pattern for Morning Mist, Neptune, Golden Glory and Travertine 7.2m<sup>2</sup> Project Pack.

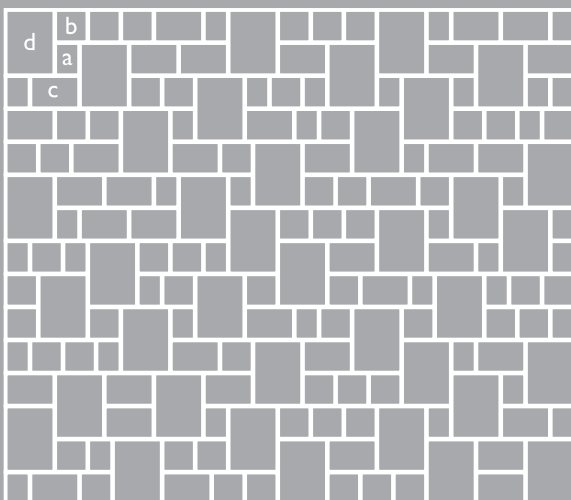
7.2m<sup>2</sup> Project Pack Contains (sizes in mm):



## Laying Guide | Plan D

Laying pattern for Old Rectory and Ocean Green Slate Cobble 10.71m<sup>2</sup> Project Packs.

These Laying Guides are illustrated examples to assist you in creating exciting and attractive designs.



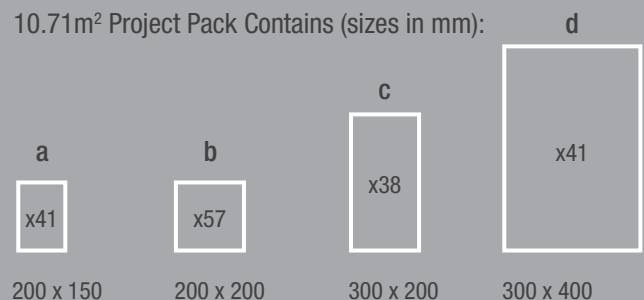
Project Pack  
Laying Plan

SIZES

- a) 200 x 150mm
- b) 200 x 200mm
- c) 300 x 200mm
- d) 300 x 400mm

Laying pattern for Old Rectory, Ocean Green Slate and Cobble 10.71m<sup>2</sup> Project Pack.

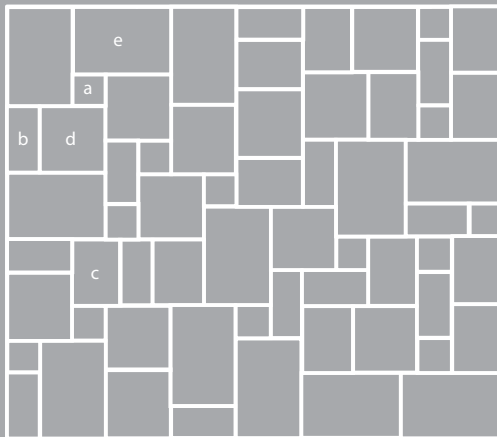
10.71m<sup>2</sup> Project Pack Contains (sizes in mm):



# Laying Guide | Plan E

## Laying pattern for Gardenstone 15.87m<sup>2</sup> Project Pack.

These Laying Guides are illustrated examples to assist you in creating exciting and attractive designs.



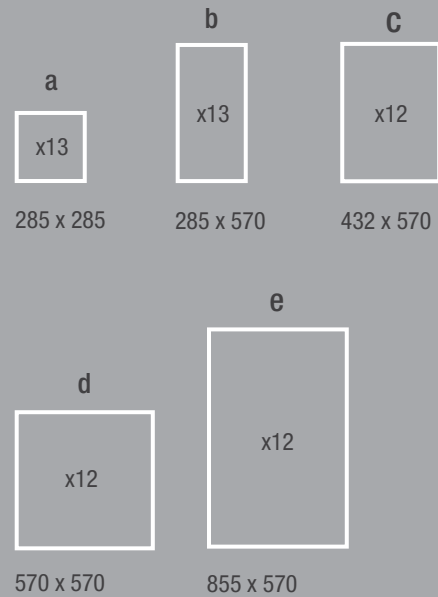
Project Pack Laying Plan

### SIZES

- a) 285 x 285mm
- b) 285 x 570mm
- c) 432 x 570mm
- d) 570 x 570mm
- e) 855 x 570mm

Laying pattern for Gardenstone in 15.87m<sup>2</sup> Project Pack.

15.87m<sup>2</sup> Project Pack Contains (sizes in mm):

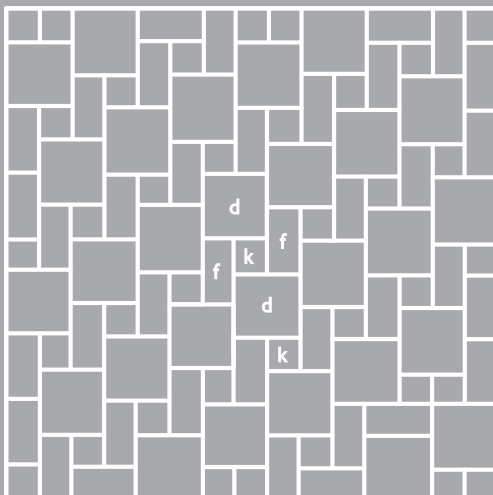


The product sizes and coverage stated are those achieved when laid using a 10mm joint.

# Laying Guide | Plan F

## Laying pattern for three size modules.

These Laying Guides are illustrated examples to assist you in creating exciting and attractive designs.

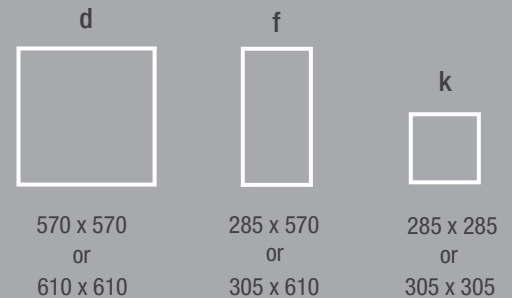


Can be done with either of the following sizes:

- d) 570 x 570mm
  - f) 285 x 570mm
  - k) 285 x 285mm
- or
- d) 610 x 610mm
  - f) 305 x 610mm
  - k) 305 x 305mm

Laying pattern for three size modules.

(sizes in mm):

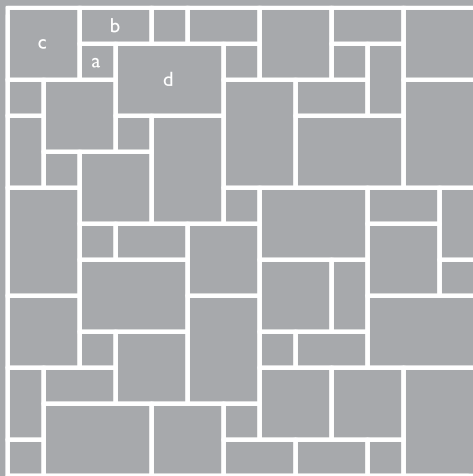


The product sizes and coverage stated are those achieved when laid using a 10mm joint.

## Laying Guide | Plan G

### Laying pattern for Global Granite Paving.

These Laying Guides are illustrated examples to assist you in creating exciting and attractive designs.



Laying pattern for Global Granite Paving.

#### SIZES

- a) 305 x 305mm
- b) 305 x 610mm
- c) 610 x 610mm
- d) 915 x 610mm

(sizes in mm):



305 x 305



305 x 610



610 x 610



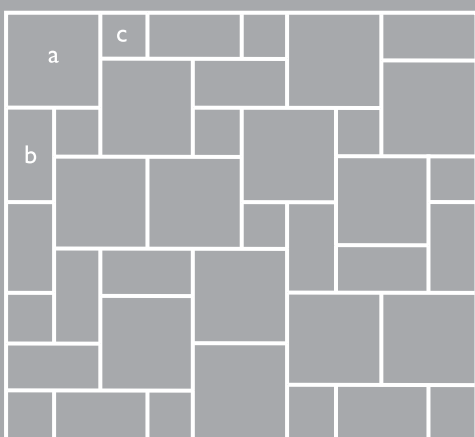
915 x 610

The product sizes and coverage stated are those achieved when laid using a 10mm joint.

## Laying Guide | Plan H

### Laying pattern for Sandstone and Mirage 7.3m<sup>2</sup> Project Packs.

These Laying Guides are illustrated examples to assist you in creating exciting and attractive designs.

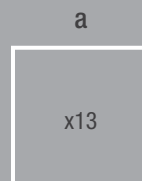


Laying pattern for Sandstone and Mirage Paving.  
7.3m<sup>2</sup> Project Pack.

#### SIZES

- a) 570 x 570mm
- b) 285 x 570mm
- c) 285 x 285mm

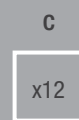
(sizes in mm):



570 x 570



285 x 570



285 x 285

The product sizes and coverage stated are those achieved when laid using a 10mm joint.

# Global Stone Installation Guidelines

## Laying Global Stone Flagstones

### INTRODUCTION

Global Stone supply many types of paving materials and the most suitable laying method is determined by two principal factors: the type of paving unit (eg: paving stones, setts, kerbs) and the planned use (eg: patio, driveway, roof terrace). The following information is intended as a guide to the more usual projects that are likely to be undertaken by the more experienced DIYer.

### PREPARATION

Before laying, all products should be carefully inspected, so that time is available for products to be replaced if found to be defective. No responsibility will be accepted for any delays, re-laying or removing costs if this has not been done.

### ESSENTIAL TOOLS

Professional landscapers would consider the following list of items essential for any paving project: Gloves, goggles, spade and/or shovel, wheelbarrow, brick trowel, pointing trowel, lump hammer, bolster chisel, rubber mallet, long spirit level, string line, line pins or stakes, soft brush, tape measure, straightedge timber, small cement mixer, plate compactor ('wacker' plate) and an angle grinder. However, it would probably be more appropriate for a DIYer only planning a single project at home to hire the larger, powered equipment.

### SETTING-OUT

Paving should be laid at a level that is at least 150mm below the damp proof course (DPC) of any adjacent building except where level access is required at a doorway (eg: for disabled access). If working against a building, it may be possible to use the horizontal brickwork jointing as a guide to level. Alternatively, a taut string line or a temporary chalk line can be used as a guide.

### FALLS

All paving must be drained. This is usually achieved by sloping the paving in one direction or another to direct the surface water towards a suitable disposal point, which might be a gully, a linear drain, or the edge of the garden. Whenever possible, surface water is directed away from any buildings. The riven texture of many natural stone paving materials means that water can sit on the surface more easily than might be the case with some manufactured paving materials. Consequently, it's recommended that natural stone paving should be laid to a fall of not less than 1:60 - this means that for every 60 measure along the paving, there is a drop (or a rise) of at least 1 measure. This might be 1cm in 60cm or 1 metre in 60 metres: all these generate a fall of 1:60. For ease of calculation, 1:60 means a fall of 17mm per metre. When determining levels away from a building, a taut string line set between driven ranging stakes is a good guide to both level and alignment. The simplest way to create an accurate perpendicular (90° or right angle) line from a building is to use a 3-4-5 triangle.

### BASE

All paved areas, whether they be used as driveways, paths or terraces, require a stable base. The depth/strength requirement of this base varies according to the planned use of the paved surface. For example, a private driveway will require a base layer of concrete at least 100mm thick, and this may need to be spread over a strengthening layer of compacted stone or hardcore, whilst a mortar bed approximately 50mm thick, laid directly onto firm ground could be sufficient for a lightly trafficked walkway. Every project site is different and a judgement will have to be made at the start of the project as to the long term stability of the existing ground. Please bear in mind that it is always best to err on the side of caution and lay a stronger base at the outset, than have to lift and reinstate a sunken area in the future.

## Global Stone Types of Paving

Global Stone supply two different types of paving; variable and calibrated thickness. We carefully select the variable thickness paving to ensure the natural variation is not excessive, so most of these paving stones will have a thickness of 25-40mm. The calibrated paving has been processed to a uniform thickness of 20-25mm depending on the type of product. This difference dictates on how the paving is best laid. The variable paving needs to have each stone's bed prepared individually to accommodate their slight difference in depth, while the calibrated paving can be laid onto a larger area of pre-levelled (landscapers call it 'screeded') bed.

We find that best results are obtained when our paving is laid onto a bed of coarse sand and cement, though on projects involving variable thickness paving, some professionals like to incorporate a small percentage of soft building sand to aid the pliability of the mortar mix and increase its adhesive properties. Using a small mixer, put a half bucket of clean water into the empty drum. Add four or five shovelfuls of coarse sand and one shovelful of cement. Allow this to mix, and then add another four or five shovelfuls of sand and a further shovelful of cement.

Let this turn over for a couple of minutes, by which time the cement should be completely stirred through the sand, creating a uniform colour. The mixture should be damp, but not wet, creating what we call a 'moist mix'. The exact amount of water added will vary with the dampness of the sand, but the end mix should be damp enough to cling together when squeezed into a ball, but no water should dribble out when squeezed. When mixed, this bedding material has a working life of approximately one to four hours, depending on the time of year. It is best practice to only mix as much material as you can be sure of using in about one hour.

### VARIABLE THICKNESS PAVING

Use a shovel or a brick trowel to spread the freshly-mixed bedding material in a layer that is roughly 25-40mm thick and extends over an area just larger than the paving stone that is to be laid. Ripple the surface of the bed so that there is some 'give' when the paving stone is placed. Position the stone, allowing for the appropriate joint thickness, and tap it down to the correct fall with a rubber mallet, checking the level with a spirit level.

### CALIBRATED PAVING

The technique known as 'screeding' is used to prepare the bed for calibrated paving. Use a shovel to spread the freshly-mixed bedding material over the area, large enough for several paving stones in a layer that is roughly 40-60mm thick, and pat it with the back of the shovel to lightly compact it. It is important to use 'not too much' of the bedding, because it has to be scraped off, using a long, straight board to remove the excess bedding material, leaving a smooth and level surface onto which the paving can be placed. To achieve the correct level for the screeded bed, a reference level is required. This might be an existing edge (or kerb or edge course) or it can be a 'rail' set at the level of the underside of the paving.

### GLOBAL STONE PAVING ON DRIVEWAYS

Although best suited for patios and pathways, Global Stone paving can be used for light-use driveways. The paving will need to be laid onto a bed of concrete that is at least 100mm thick, and this may need to be laid over a sub-base (strengthening layer) of crushed stone or hardcore. The paving can be directly bedded onto the fresh concrete, as described earlier, but contractors often prefer to separately place the concrete and allow it to set before bedding the paving onto a mortar bed spread over the hardened concrete.

### LAYING PATTERNS

Global Stone Paving is normally laid in one of three arrangements: stack bond (like a chess board), coursed (where the paving is laid in lines or courses of the same width) or random. Stack bond needs paving stones of a matching size, while coursed layouts rely on the paving stones sharing a common width whilst their lengths vary. Random layouts mix units of various lengths and widths and are generally considered to be the most attractive layout for patios and driveways.

### HANDLING THE PAVING

Paving stones can be heavy and cumbersome so take care when handling them. As a rough guide, any paving stone 570 x 570mm or larger is best handled by two people, stood on one edge and carefully lowered into position. Smaller paving stones can be lifted into place by one person.

It is important to note that paving stones have a definite 'face' and a 'base'. This means that there is a right way up, and a wrong way. The 'face' on all Global Stone hand cut sandstone paving has four neatly trimmed edges and the sides taper inwards towards the base (ask for help if you are unsure). Although the paving will not break or fall apart if laid upside-down, the face has been specifically chosen to present an attractive, safe surface that shows off the natural beauty of the stone. The base may be more uneven and unattractive, and laying upside-down will definitely result in joints that are much wider than normal.

# Global Stone Installation Guidelines

At the outset of the project, think about how the paving will be jointed. In most cases, a joint width of 8-15mm is used, our suggested layouts allow for an average joint of 10mm, with the joint being filled with a mortar or other pointing material. However, some people prefer to use narrow joints (sometimes referred to as 'butt-jointing') which rely on 2-5mm wide joints that are filled with Kiln Dried Sand.

## COMPACTING THE PAVING

Ideally, when first positioned, the paving will sit approximately 6-12mm proud and will need to be knocked down to the correct level. This steadies the paving, ensuring it lies flat and is evenly supported, as well as 'keying' it into the bedding material.

Once the paving is in the correct position, (remembering the chosen joint width), it should be tapped down using a rubber mallet until it is at the correct level. Aim the blows at imaginary points that are halfway between the centre and each corner of the paving stone, and use firm but not heavy blows to 'persuade' the stone down to the desired level. If the flagstone refuses to go down to the level, then it is better to lift the stone, scrape out some of the excess bedding and re-lay rather than risk breaking the stone by hitting it with too much force. However, if the paving stone goes down too far, it will have to be lifted and extra bedding added to the existing bed.

## CHECKING THE LAID PAVING

Once laid, paving stones should be stable (ie: they should not 'rock' from corner to corner) and there should not be any dangerous 'lips' between adjacent units. Some smaller paving stones (285 x 285mm) can be awkward to stabilise due to their size. Using a slightly wetter bedding mix will usually overcome this problem by causing the paving stone to adhere to the bed. When checking levels and surface profile regularity, use a long spirit level or a straight-edged length of timber to ensure adjacent paving stones are relatively level, with no high spots or hollows. If there is any doubt, correct the problem at this stage - it is much easier to put it right now, before the joints are filled.

## Laying Global Stone Setts

Setts are usually laid one-at-a-time to accommodate the slight variation in thickness that is found with many natural stone paving products. The setts should be laid onto a bed of mortar or concrete and 'keyed' in by gently tapping to level in a similar fashion to the variable thickness flagstones.

For pathways and light-use patios, the setts can be laid onto a 40-75mm thick bed. Driveways or areas subject to heavier use will need to be constructed using a 100mm thick bed of concrete, and it may be necessary to include a sub-base (strengthening layer) of selected crushed stone or hardcore. The bedding mortar described above for use with paving stones, can be used to lay setts into patios and along pathways, but for driveways, a concrete comprising four measures of 10-14mm chippings with two measures of coarse sand and one measure of cement should be used.

## LAYING PATTERNS

Setts are normally laid in one of three arrangements: stack bond (like a chess board), coursed (where the stones are laid in lines or courses of the same width) or decorative. Stack bond needs setts of all one plan size, while coursed layouts rely on the stones sharing a common width but various lengths. Decorative layouts include complex patterns such as fans, arches and bogens - these patterns can be difficult to lay and are usually best left to specialist contractors.

## PLACING THE SETTS

Stacked or coursed layouts are laid using a taut string line as a guide to both level and alignment. The bedding material is roughly graded using a shovel, laying out sufficient material to support a linear course of 2-4 metres of setts to be laid. It is levelled out using a trowel, and each sett is individually placed, aligned and compacted using a rubber mallet, before placing the next. Ideally, when placed, each sett should be 10-20mm proud of the desired level, so that it can be tapped down using the mallet, embedding the set into the mortar or concrete in the process. Using a short piece of 10mm timber can help ensure regular joint widths are maintained between the somewhat rough hewn edges of the setts.

This rough hewn texture can make sett laying quite a challenge. To improve the final appearance, a tip is to lay the forward edge of the setts to a taut string line, allowing any variation in width to be taken up by the joint created between the newly laid setts and those of the preceding course.

## CHECKING THE LAID SETTS

Working to a taut string line ensures the setts are fairly accurately positioned for alignment and level. The riven texture can result in unexpected high spots or hollows within a course, so it is essential that the surface level is regularly checked using a long spirit level or a timber straightedge, and any problems corrected before proceeding. It is a good idea to check in both directions, along the courses (transverse) and across several courses at a time (longitudinal), as well as standing back and visually assessing the laid setts from several positions.

## Laying Global Stone Cobbles

The calibrated thickness of the Global Stone Granite Cobbles allows the landscaper to lay them onto a screeded, bed prepared in the same way as for the calibrated flagstones. As with the small setts, these small pavers will need to be laid onto a mortar bed suited to the proposed use of the finished surface, (ie: 40-75mm in light pedestrian areas, but increasing to 100mm with the possible addition of a compacted sub-base in tougher driveway conditions).

## Cutting and Jointing of Paving Materials

### CUTTING PAVING

Paving stones are best cut using a power saw or angle grinder, fitted with a diamond blade specifically rated for cutting stone (or concrete). These can be hired locally and the hire depot will provide you with full instruction on how to use them safely. Bear in mind that saw cutting of stone generates lots of harmful dust. Ask the hire depot about a water suppression kit to dampen down the dust and make sure you wear a suitable dust mask and safety eyewear.

Smaller paving units, such as setts, can also be cut using a bolster or pitching chisel. Make sure eye protection is worn as small scalplings or shards are likely to fly up when the stone is struck. Align the bolster on the face of the set where the cut is required and strike firmly with a lump hammer. It may take several blows to break the stone and it may be necessary to trim the cut edge in order to make it fit the gap.

### JOINTING

The joints between paving units can be filled with various materials. Traditionally, most paving and setts would be jointed (or pointed) with a sand/cement mortar. While this is still a popular option, it can be slow and messy, especially if you are not familiar with pointing techniques. Happily, there are alternative strategies that might be suitable for your project.

### MORTAR JOINTING

This traditional method uses a strong mortar (four parts sand to one part cement) to fill the joint. The mortar should be mixed in small quantities, say one 25kg bag of sand at a time, because pointing is a slow process and the mortar has a fairly short working life (20-60 minutes depending on time of year).

The same coarse sand used for the bedding, though the softer 'building sand' gives a smoother, more adhesive mortar and is generally considered to be easier to work.

The mortar should have a workable but flowing consistency, something akin to the mix for a rich fruit cake, and able to stand in 'peaks' without slumping too much. Adding a plasticiser to the mix water makes the mortar far more workable. It is worth noting that some bags of cement contain a built-in plasticiser, so there is no need to add one to the mix water - check the packaging on your cement.

### POLYMERIC JOINTING MATERIALS

This group of products is a modern development, and despite being somewhat costly when compared to traditional mortar, they are much, much faster. The polymeric mortars are made from selected sand mixed with a special resin that starts to harden when exposed to the air or to moisture. The products are simply brushed into the joints, any excess is swept off the surface of the paving, and in 12-24 hours, the material will have hardened to form a perfect joint.



# Global Stone Installation Guidelines

## KILN DRIED SAND

This is only used with narrow joints, (less than 5mm), and caution is required before opting for this style of jointing material because the sand is likely to be washed out by wind and/or rain over time, as well as the risk of it providing the ideal home for weeds and mosses. This technique can only be used when the surface of the paving is dry. The sand is supplied in plastic bags to ensure it remains dry and free-flowing. A bag is emptied onto the dry surface of the paving and simply swept into the joints using a soft brush.

## Historical Installation Practices to be Avoided

'Five-Dot Paving', ie laying flagstones onto individual dots, dabs or spots of mortar is sometimes shown in older text books as a suitable method for laying paving, but it really ought to be avoided and it is no longer an approved laying technique amongst modern landscapers. There are several good reasons for this:

Firstly, it doesn't provide full and uniform support for the flagstones. Some parts are supported; others are left 'bridging' two spots, which makes them more prone to breaking.

Next, those empty spaces between mortar spots are a recipe for disaster. They allow water to pool underneath the paving, which encourages the growth of algae on the surface, but also destabilises the sub-layers, causing some of the finer material to be washed away. This, in turn, undermines those mortar spots, and the flag will start to rock, pivoting on the spots that haven't settled or shifted.

Furthermore, the spaces underneath the flagstones also provide an ideal hidey-hole for invertebrates and small mammals that will mine or tunnel through the sub-layers, again destabilising the paving and resulting in uneven settlement or broken flagstones.

Finally, with some types of flagstone, the bedding will alter the porosity of the flagstone and visibly affect the surface appearance. This is especially apparent should the Global Sandstone flags be laid in this manner.

## SEALING YOUR PAVING

Many homeowners choose to seal their new paving to protect it from accidental staining and to reduce the risk of allowing algae and lichens to establish themselves on the surface and joints, discolouring the paving and masking the natural beauty of the completed work.

There are many different sealants on the market, providing different finishes and often changing the appearance of the paving. High gloss sealants rarely look 'natural' and can sometimes make the treated surface slippery and unsafe. Polyurethane sealants are best suited to concrete block paving rather than natural stone. If you intend to seal your paving, make sure it is completely dry and free from efflorescence. It may take a period of time to ensure that the bed underneath has fully dried out. Always use a quality natural stone sealer and follow the manufacturer's instructions.

## Post Installation Guidelines

There are also specific sealants for specific stones. Sandstone is often more porous than, say, granite, and so some manufacturers offer sealants designed to suit the characteristics of individual stone types. These are often very good quality products, but invariably expensive (cost of treatment in excess of £5 per square metre).

One of the best products for many types of stone is Lithofin MN StainStop. This is a top quality sealant suitable for use both indoors and out, and will protect your paving for 2-5 years depending on how heavily used it might be. For those that prefer the richer colours that appear when paving is damp, Lithofin MN Colour Impregnator will give a permanent damp look and can be applied before using the StainStop sealant. Apply sparingly: it is better to build up the 'damp look' to the desired level in a series of stages rather than overdo it in one application and find that the effect is 'too much'. Once a satisfactory 'damp look' has been achieved, it can be 'fixed' by applying one or two coats of the StainStop.

As with any surface treatment, the finished effect will depend on a collection of factors such as stone type and condition, but also on less obvious factors such as whether it is in a shady or sunny position, so it's a good idea to try out the treatment in an out-of-the-way corner before treating the whole patio or driveway.

Obviously, all paving should be in pristine condition prior to sealing. There is little sense in sealing in stains and empty joints, and so preserving them for several seasons more. Prior to sealing, the paving should be thoroughly cleaned, and checked for any defects. Ensure joints are full and that there are no loose pavers or flagstones. Because faults and minor defects rarely show up straight away with new paving, as well as the possibility of efflorescence developing on a small number of installations, it is strongly recommended that all paving is left untreated for at least six weeks. Sealing immediately upon completion tends to seal-in problems and make them much more difficult to rectify.

It's essential that the paving is completely dry before applying colour enhancers and/or sealants, and so it is never a good idea to attempt sealing during the damper, cooler months of October to April. Try to choose a time when there have been at least two days without rain or precipitation, and remember that users will not be able to access the paving for several hours following sealing. Also, avoid breezy days when there is a risk of dust and detritus being blown onto the freshly sealed surface.

If using a colour enhancer/impregnator, this must be done FIRST. It is not possible to enhance the colour of a newly-sealed driveway. Follow the manufacturer's instructions to the letter. Don't cut corners, and if it says to leave off any further treatments for two hours, make sure it really is at least two hours. On those occasions when sealant treatments go wrong, the manufacturers will not entertain any claim where they suspect the application procedure was not followed rigorously.

Many sealants will require two coats to achieve full cover. This is especially true with new stone and paving that has not received any other treatment. The first coat tends to soak in and coverage can be worryingly low, just a couple of square metres per litre in some cases. However, the second or subsequent coat usually goes much further, five-eight square metres per litre is not unusual, and the coverage rates reported by manufacturers often aggregate the rates for the two coats. Many sealants will dry or cure in two-six hours. Protect the paving with flutter tape, temporary fencing or barriers during this time.

A good quality sealant will usually provide three-seven years of protection before it will need re-doing. Cheaper sealants are often a false economy as they may last only one season. Generally speaking, it's a good idea to use the same type/brand of sealant when the time comes to re-seal, so keep a record of what was used, when, and from where it was sourced.

## Maintaining your new Global Stone Paving

Despite what is claimed by some suppliers and installers, there is no such thing as maintenance free paving. All paving needs a little bit of care and attention to keep it in tip-top condition. By choosing Global Stone Paving, you have started with the very best, so the maintenance requirements will be lesser than those of cheaper offerings.

### WEEKLY BRUSHING

The simplest maintenance is brushing. Regular sweeping will remove detritus before it has a chance to accumulate and stain or damage the paving. Autumn leaves may look stunning on the trees, but when they fall and land on the paving, they may stain if allowed to lie there over the winter. This is even more important for berries, hips, drupes and other fruits. Remove these as soon as they are spotted.

### STAINS

Where stains have occurred there are many and varied proprietary products that are claimed to be the perfect cleaning solution. However, care is required as some of these cleaning products, particularly those that are based on, or include hydrochloric acid, can damage the paving surface, make worse the existing stain, or even create a whole new stain! As with all surface treatments, test the product on a discreet corner before using it elsewhere.

Most stains can be removed with soap and water. Hot water sometimes is more effective than cold, and many experienced cleaning contractors prefer to use a mild soap, such as those found in baby shampoos, rather than a harsh, floor-cleaning type product, which may adversely affect the colouring of the stone.

# Global Stone Installation Guidelines

## POWER WASHERS

While hosing down a paved area every few weeks is unlikely to do any long-term damage to the paving, power washers can, and do, seriously damage some pavements. The force of the water exploits any minor cracks or weaknesses and blasts out loose stone or slightly weak jointing. While they can rejuvenate tired, dirty paving, regular use will often do more harm than good. If you find that your paving gets dirty very quickly (overhanging trees or close to a busy road) consider using a quality sealant to protect it rather than abrade the surface on a weekly basis with a power washer.

## RUNNING REPAIRS

Regular brushing also offers the opportunity to inspect the paving for any minor defects. The jointing is the most likely element of the pavement to suffer. Cement mortars degrade over time, while sand jointing can be lost due to scour from wind and water. Lost jointing may allow damaging surface water to find its way into the sub-layers and further weaken the structure, so it makes sense to repair as soon as a problem is identified.

Cut out any damaged mortar jointing, and replace it with fresh 3:1 mortar to a depth of not less than 25mm (any less is unlikely to bond properly). Polymeric-filled joints rarely degrade or come loose, but if it was to happen, the affected area should be cut out and replaced to full depth.

Lost jointing sand is a more common defect and easily remedied by topping-up with fresh kiln dried sand. When jointing sand is repeatedly lost from a pavement, it may be a good idea to consider a joint stabiliser or even a sealant to 'fix' the jointing in place once and for all.

## ALGAE, MOSSES AND LICHENS

Where lichens (black spots) and/or algae (green discolouring) are a problem, regular swilling of the surface using a weak bleach is often beneficial. Wet the paving first, then apply diluted bleach via a fine rose from a watering can, and allow 10-20 minutes before washing off. Don't allow the bleach to dry on the surface: wash off sooner if the surface is drying out more quickly than anticipated, and repeat the treatment. This regime has been found to be very effective at keeping algae, lichens and mosses off unsealed stone paving, without damaging the surface and at minimal cost.

## EFFLORESCENCE AND PICTURE FRAMING

Efflorescence was traditionally a problem associated with concrete products but the growth in use of stone paving has seen an increased incidence of efflorescence, and efflorescence-like problems, occasionally affecting several different types of stone paving.

The phenomenon has only come to prominence in the last few years and as research into its causes is still ongoing, and given the vast collection of stone now being supplied to the residential paving market, there is no definitive answer for how it is caused. It is thought by most to be related to the porosity of the stone, which would partly explain why it affects some stones and not others. It is advisable to use light coloured or washed sands with light colour limestone, sandstone and granite paving.

Most of the problems involving discolouration and picture framing occur with relatively porous stone types (many of the sandstones plus silver-grey granite) when they have been allowed to dry out completely. Having stone sat in the summer sun causes it to lose all of its moisture content by evaporation. When it is then laid on a wet mortar bed or pointed with a wet mortar, it 'sucks in' moisture, bringing cement particles, clay fines and iron minerals with it, which are later deposited on the surface as further evaporation dries out the paving once more.

Regardless of which stone is being used and regardless of technique, it's important to remember that stone is a wholly natural product and as such there is an inherent variation in porosity, colour, texture and grain size. It's not unknown for one flagstone to discolour while its immediate neighbour remains completely unaffected. This does not mean there is a problem with the stone: it's just the way things are with natural stone paving.

While discolouration and picture framing can look unattractive when first encountered, the effect and its visual impact do lessen over time and it is quite likely that in 12 months the problem will have lessened significantly or disappeared completely. Don't be panicked into ripping up and replacing affected paving immediately. Give it time, allow nature to run its course and review the situation the following year.



## Top Tips for Your Natural Stone

Below are some of our experts' suggestions to help you with your project:

- Always use a full bed of mortar under the paving, not spot bedding, as this leaves voids that can affect the performance of the paving.
- When using multiple packs of paving, randomly select slabs from each pack to give an even mix of colour shades for your project.
- Do not use acid based cleaners with natural stone as this can severely damage the paving. Mild detergents are the preferred cleaner. Take care if using power cleaners as they can damage the surface of the paving and take out the pointing.
- If you intend to seal your paving, make sure it is completely dry and free from efflorescence. It may take a period of time to ensure that the bed underneath has fully dried out. Always use a quality natural stone sealer and follow the instructions as recommended by the manufacturer.
- Natural stone for internal projects would need to be sealed and again a quality sealer should be used and all manufacturer instructions followed.
- We recommend that you visit your local stockist to view the paving as the brochure colours are only as accurate as the printing process allows. Natural stone, by its nature, has considerable colour variations which cannot always be visible in a brochure or online.
- Where indicated, the dimensions of the paving are those achieved when using the appropriate joints. This will make it easier for you to plan and order the correct quantities for your project.

# Global Stone General Information

## Colours and Surface Texture



The majority of the photos in our brochure have been taken with the stone being dry. The colours within natural stone will become much more vibrant when wet and will again lighten when dry.

Natural stone may develop brown markings as its natural iron content oxidises. This temporary phenomenon should disappear after a period of time. The colours shown throughout this brochure are as accurate as the photographic and printing processes allow. Prior to ordering, products should always be inspected and chosen in daylight. Colour and tonal variations will occur in natural products, no sorting of crates will be undertaken. When using several packs, flags should be blended throughout the project to produce an overall natural appearance. Ensure you purchase your requirements in one purchase as you can then mix together all the paving from all the crates. The beauty of many of the products featured results from splitting which gives a unique textured surface and colour variation in the natural product.

Sawn products like Travertine may have ingrained dust which you can leave to wear off or clean off with water and a stiff broom.

## Product Dimensions

As these are natural products, all dimensions are nominal and are subject to cutting tolerances in both size and thickness. The product sizes and coverage stated are those achieved when laid using appropriate joint width for the given product.

## Pack Sizes

Please note some products may be subject to a minimum order. Some products are only available in Project Packs. Please check pack sizes and availability with your local stockist.

## Health and Safety

Many of the products featured are heavy. It is recommended that items over 25kg, or those which are awkward in shape and size, should be handled by more than one person or suitable lifting equipment used.

It is suggested that gloves are worn to prevent abrasion to hands and lime burns from wet mortar. Eye protection should also be used when cutting with either chisels or rotary disc cutters. When using a rotary disc cutter, make sure a suitable diamond blade is selected. A diamond cutting blade will give a clean cut, but please use with care and get full instructions on use from your hire shop.

## Suitability of Products

Products in this brochure are suitable for domestic pedestrian and driveway applications, where indicated, when installed correctly. Please ask your stockist for guidance. For high wear applications such as roadways, shopping precincts etc, please consult your local merchant for suitable products.

## Innovation and Improvement

Our policy is one of continuous improvement, innovation and development and, as such, we reserve the right to change our specification without notification. Sales are subject to the Company's terms and conditions of sale, a copy of which is available upon request.

## Ethical Trading Policy

Social and environmental policies underpin our corporate responsibilities. Our suppliers are visited and monitored to ensure they are ethical in their operations, particularly with regards to labour and the environment. Visit the website for more information.

Certificates for our main sandstone supplier, left to right:



Global Stone would like to thank the following for their contributions to the 2014 brochure:

Karen Chamberlain Design  
Rowebb Landscape Centres  
C.G. Edwards  
Hutchinsons Landscapes  
Paul Mooney Building Services  
CW Berry  
Kirman Design ([www.kirmandesign.co.uk](http://www.kirmandesign.co.uk))  
Kings Landscapes  
Thistle Building Supplies  
and all the customers who allowed us to photograph their gardens.  
[www.pavingexpert.com](http://www.pavingexpert.com)

# The 2014 Collection



Old Rectory



Serenity Coping



Artisan



Limestone



Marble



Travertine



Sandstone



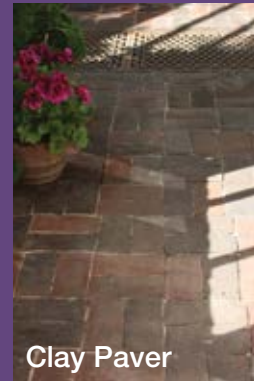
Petrous



Granite



Yorkstone



Clay Paver

## GLOBAL STONE

NATURAL STONE PAVING

[www.globalstonepaving.co.uk](http://www.globalstonepaving.co.uk)

Global Stone (Colchester) Ltd., Tey Gardens,  
Church Lane, Little Tey, Colchester, Essex CO6 1HX  
DISTRIBUTION CENTRE ONLY

Tel: 0845 60 60 240 (Lo-call Rate)

Email: [sales@globalstonepaving.co.uk](mailto:sales@globalstonepaving.co.uk)